

# **SHARPE<sup>®</sup> VALVES**

---



**SERIES 50F7  
SEAL WELD 6000#  
BALL VALVE**

# SERIES 50F7

## VALVE PARTS AND IDENTIFICATION

### SEAL WELD CONSTRUCTION

ASTM A351 CF8M

ASTM A216 WCB

ASME B16.34 CLASS 2500

6000 CWP RATING

NACE MR-01-75

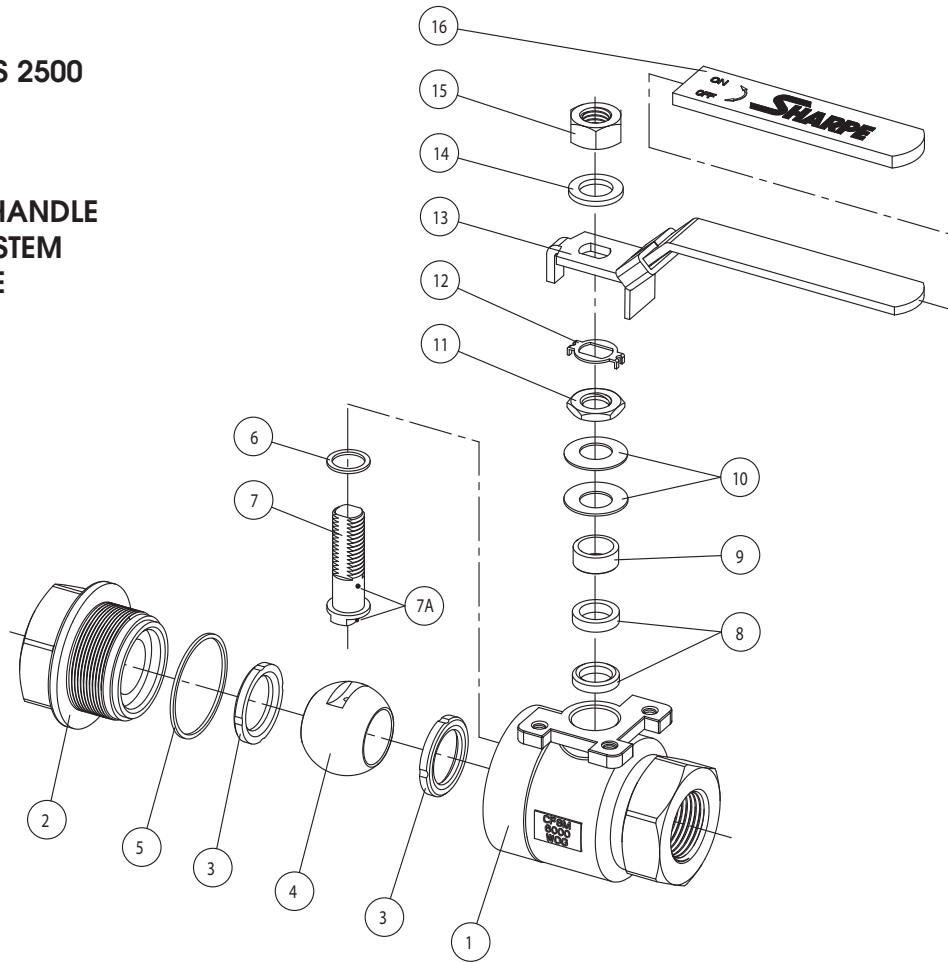
API 608

LOCKING DEVICE HANDLE

BLOW OUT PROOF STEM

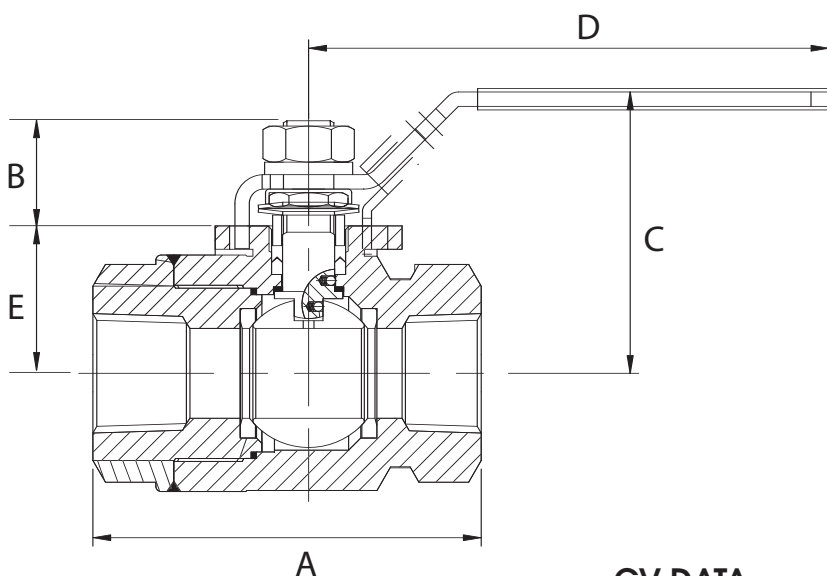
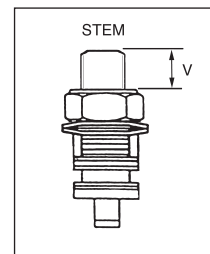
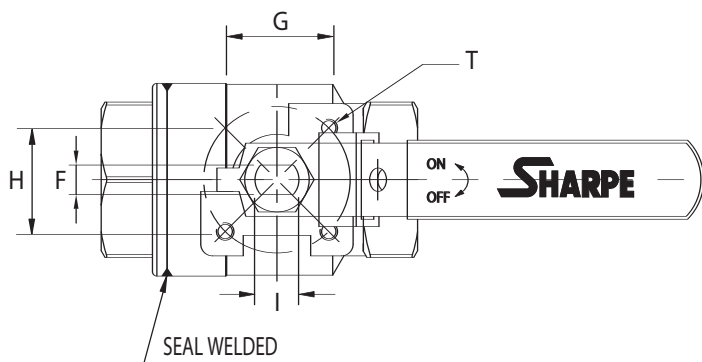
ANTI STATIC DEVICE

ISO MOUNTED PAD



PART NO.	PART	QTY.	MATERIAL
1	Body	1	Carbon Steel ASTM A216 WCB 316 Stainless Steel ASTM A351 CF8M
2	End Plug	1	Carbon Steel ASTM A216 WCB 316 Stainless Steel ASTM A351 CF8M
3	Seat	2	Delrin / PEEK
4	Ball	1	316 Stainless Steel
5	Gasket	1	PTFE / Graphite
6	Thrust Washer	1	PTFE / PEEK
7	Stem	1	ASTM A276 316 / 17-4 PH
7A	Anti Static Device	2	316 Stainless Steel
8	Stem Packing	2	PTFE / Graphite
9	Gland Packing	1	304 Stainless Steel
10	Belleville Washer	2	301 Stainless Steel
11	Packing Nut	1	304 Stainless Steel
12	Lock Tab	1	304 Stainless Steel
13	Handle	1	304 Stainless Steel / Zinc Plated Steel
14	Lock Washer	1	304 Stainless Steel
15	Handle Nut	1	304 Stainless Steel
16	Sleeve	1	PVC

# SERIES 50F7 DIMENSIONS



## CV DATA

1/4"	7
3/8"	8
1/2"	10
3/4"	35
1"	68
1-1/4"	110
1-1/2"	155
2"	155

## PORT

1/4"	0.37
3/8"	0.37
1/2"	0.49
3/4"	0.79
1"	0.99
1-1/4"	1.26
1-1/2"	1.50
2"	1.50

## WEIGHT (lbs.)

1/4"	1.20
3/8"	1.15
1/2"	1.50
3/4"	2.76
1"	4.87
1-1/4"	7.41
1-1/2"	12.10
2"	14.73

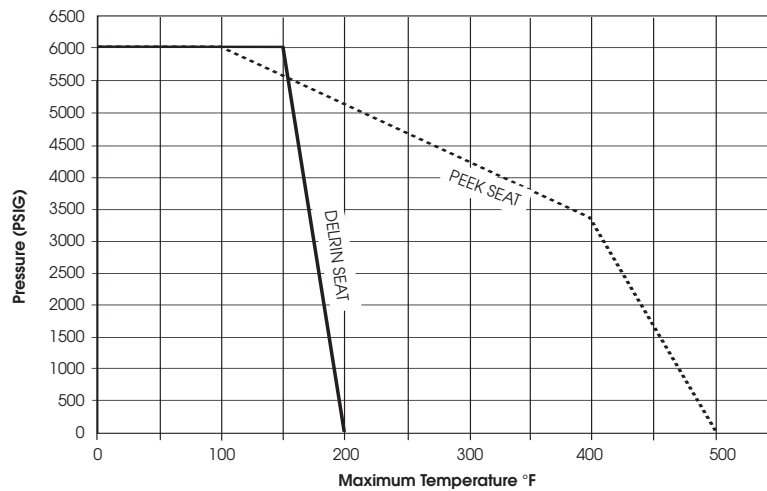
CV-The volume of water in Gal./Min. that pass through a given valve with a pressure drop of 1 PSI.

SIZE	A	B	C	D	E	F	G	H	I	V	T
1/4"	2.80	0.50	2.42	4.17	0.96	0.20	1.00	1.00	0.31	0.23	M5
3/8"	2.80	0.50	2.42	4.17	0.96	0.20	1.00	1.00	0.31	0.23	M5
1/2"	3.19	0.50	2.42	4.17	0.96	0.20	1.00	1.00	0.31	0.23	M5
3/4"	3.78	0.83	2.60	5.06	1.24	0.28	1.17	1.17	0.39	0.45	M5
1"	4.25	1.14	3.08	6.50	1.61	0.39	1.39	1.39	0.55	0.75	M6
1-1/4"	4.72	1.19	3.27	6.50	1.80	0.39	1.39	1.39	0.55	0.79	M6
1-1/2"	5.12	1.56	4.38	8.58	2.39	0.47	1.95	1.95	0.75	1.06	M8
2"	5.91	1.56	4.38	8.58	2.39	0.47	1.95	1.95	0.75	1.06	M8

# SHARPE® VALVES

Choose from our full line of high quality valves and actuators to meet your needs.

## SEAT PRESSURE/TEMPERATURE RATING SERIES 50F7



### HOW TO ORDER

VALVE SIZE	VALVE SERIES	CLASS	PW	SEATS
1/4" 3/8" 1/2" 3/4" 1" 1-1/4" 1-1/2" 2"	50F7	4 = Carbon Steel 6 = Stainless Steel	PW	D = Delrin P = Peek

**3/4"   50F7   6   PW   D**

# SHARPE® VALVES

A Division of Smith-Cooper International, LLC

Toll Free: 1-877-7SHARPE

(877) 774-2773

Fax: (708) 562-9250

Email: [info@sharpevalves.com](mailto:info@sharpevalves.com)

[www.sharpevalves.com](http://www.sharpevalves.com)

1260 Garnet Drive

Northlake, Illinois 60164 U.S.A.