

# Series 35114

## 150# Flanged Cast Steel Gate Valve

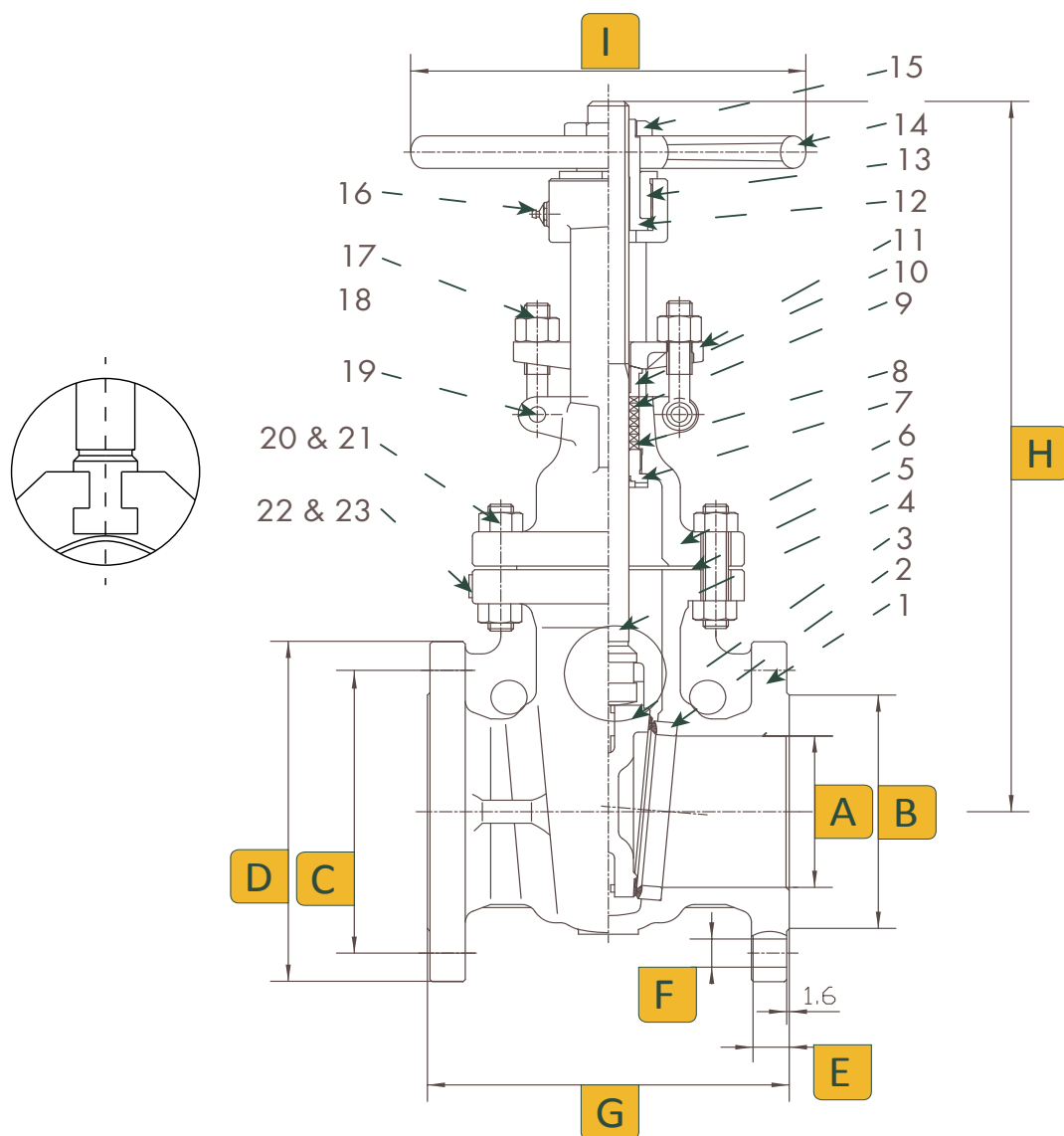
### Features

- Full port
- Outside screw and yoke
- Bolted bonnet
- Flexible wedge, fully guided integrated seats
- Rising stem and non-rising hand-wheel
- Tongue and groove between body and bonnet
- Applicable Standards:
  - Gate valves API 600
  - Steel valves ANSI B16.34
  - Face to face ANSI B16.10
  - End flanges ANSI B16.5
  - Buttweld ends ANSI B16.25
  - Inspection and test API 598



*Valves, Automation & Controls*



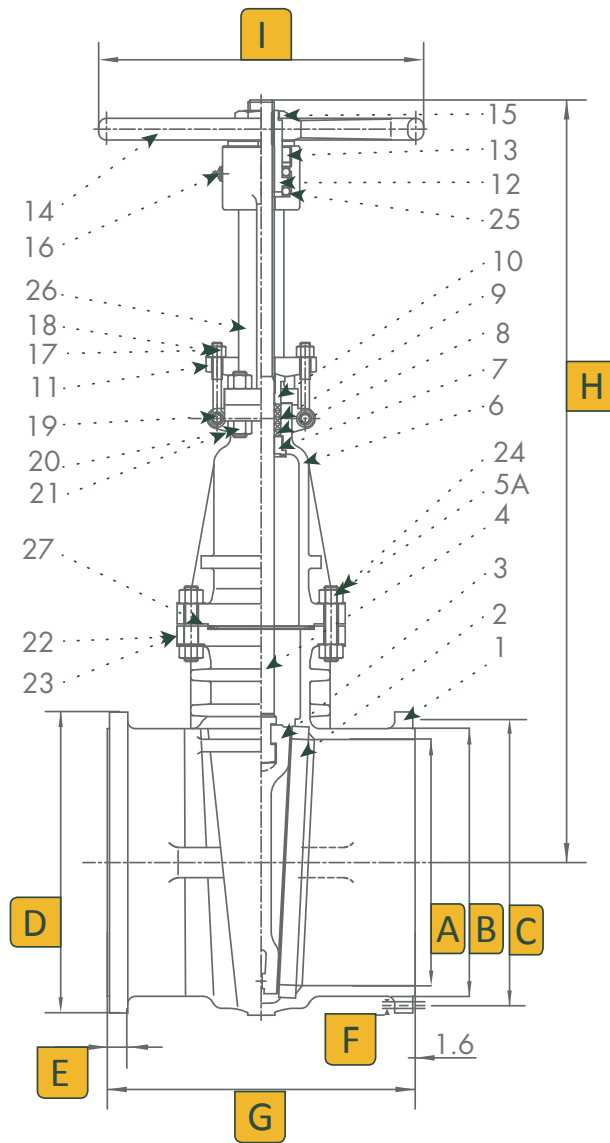


Dimensions (Inches)

Size	A	B	C	D	E	F	G	H	I	Num of Bolt Holes
2	2.01	3.62	4.76	5.98	0.75	0.75	7.01	12.99	7.87	4
2-1/2	2.52	4.13	5.51	7.01	0.89	0.75	7.48	13.98	7.87	4
3	2.99	5.00	6.02	7.48	0.94	0.75	7.99	15.47	9.84	4
4	4.02	6.18	7.52	9.02	0.94	0.75	9.02	18.70	9.84	8
6	6.00	8.50	9.50	11.00	1.00	0.875	10.50	23.42	11.81	8
8	8.00	10.62	11.75	13.50	1.12	0.875	11.50	28.86	13.78	8
10	10.00	12.75	14.25	16.00	1.18	1.00	13.00	34.40	15.75	12
12	12.00	15.00	17.00	19.00	1.25	1.00	14.00	40.00	17.72	12

No.	Part Name	Material
1	Body	Carbon Steel ASTM A216
2	Seat	A105 & STL6
3	Wedge	Carbon Steel & Stainless Steel
4	Stem	A182 - F6a
5	Gasket	304 Stainless Steel & Graphite
5A	Bolt	B7 Steel ASTM A193
6	Bonnet	Carbon Steel ASTM A216
7	Back Seat	410 Stainless Steel
8	Gland Packing	304 Stainless Steel & Graphite
9	Gland Packing	Flexible Graphite
10	Gland	410 Stainless Steel
11	Gland Flange	Carbon Steel ASTM A216
12	Stem Nut	A439-D2
13	Gland Nut	Carbon Steel
14	Handwheel	Ductile Iron
15	Lock Nut	Carbon Steel
16	Grease Nipple	Carbon Steel
17	Eye Nut	B7 Steel ASTM A193
18	Eye Bolt	2H Steel ASTM A194
19	Pin	Carbon Steel
20	Bolt	B7 Steel ASTM A193
21	Nut	2H Steel ASTM A194
22	Name Plate	304 Stainless Steel
23	Rivet	304 Stainless Steel

# 14" - 24" Dimensions, Parts & Materials



Size	A	B	C	D	E	F	G	H	I	Num of Bolt Holes
14	14.00	16.25	18.75	21.00	1.37	1.125	15.00	59.70	19.70	12
16	16.00	18.50	21.25	23.50	1.44	1.125	16.00	67.70	22.00	16
18	18.00	21.00	22.75	25.00	1.56	1.25	17.00	74.70	25.20	16
20	20.00	23.00	25.00	27.50	1.68	1.25	18.00	82.99	25.20	20
24	24.00	27.25	29.50	32.00	1.87	1.375	20.00	97.68	28.35	20

No.	Part Name	Material
1	Body	Carbon Steel ASTM A216
2	Seat	A105 & STL6
3	Wedge	Carbon Steel & Stainless Steel
4	Stem	A182 - F6a
5A	Bolt	B7 Steel ASTM A193
6	Bonnet	Carbon Steel ASTM A216
7	Back Seat	410 Stainless Steel
8	Gland Packing	304 Stainless Steel & Graphite
9	Gland Packing	Flexible Graphite
10	Gland	410 Stainless Steel
11	Gland Flange	Carbon Steel ASTM A216
12	Stem Nut	A439-D2
13	Gland Nut	Carbon Steel
14	Handwheel	Ductile Iron
15	Lock Nut	Carbon Steel
16	Grease Nipple	Carbon Steel
17	Eye Nut	B7 Steel ASTM A193
18	Eye Bolt	2H Steel ASTM A194
19	Pin	Carbon Steel
20	Bolt	B7 Steel ASTM A193
21	Nut	2H Steel ASTM A194
22	Name Plate	304 Stainless Steel
23	Rivet	304 Stainless Steel
24	Nut	2H Steel A194
25	Axle tree	
26	Yoke	Carbon Steel ASTM A216
27	Gasket	304 Stainless Steel & Graphite

Shell Test Water psi	Seat Test Water psi	Seat Test Air psi
450	314	80

Temperature °F	Working Pressure psi
-20 to 100	285
200	260
300	230
400	200
500	170
600	140
650	125
700	110
750	95
800	80
850	85
900	50
950	35
1000	20

## Ordering

Fig: 8 - 35 - 1 - 1 - 4

Description: 8" - Series 35 - 150# Flange Ends - Carbon Steel

Size	Series	Class		Ends		Body Material		Options	
2	35	1	150	1	Flange	4	Carbon Steel	X	Oxygen Service
2-1/2				2	Buttweld			SF	Silicon Free
3								RTJ	Ring Type Joint Flange
4									
5									
6									
8									
10									
12									
14									
16									
18									
20									
24									

# Series 35314

## 300# Flanged Cast Steel Gate Valve

### Features

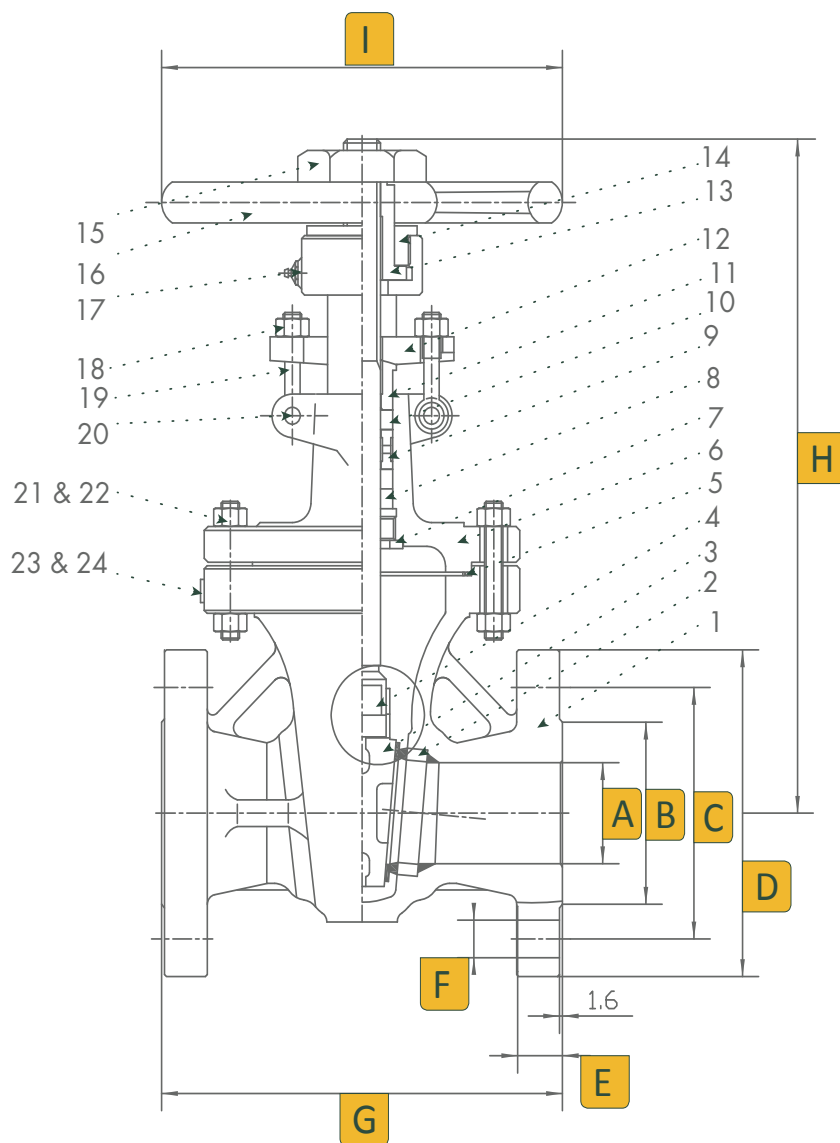
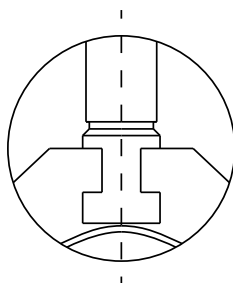
- Full port
- Outside screw and yoke
- Bolted bonnet
- Flexible wedge, fully guided integrated seats
- Rising stem and non-rising hand-wheel
- Applicable Standards:
  - Gate valves API 600
  - Steel valves ANSI B16.34
  - Face to face ANSI B16.10
  - End flanges ANSI B16.5
  - Buttweld ends ANSI B16.25
  - Inspection and test API 598



*Valves, Automation & Controls*



## 2" -12" Dimensions, Parts & Materials

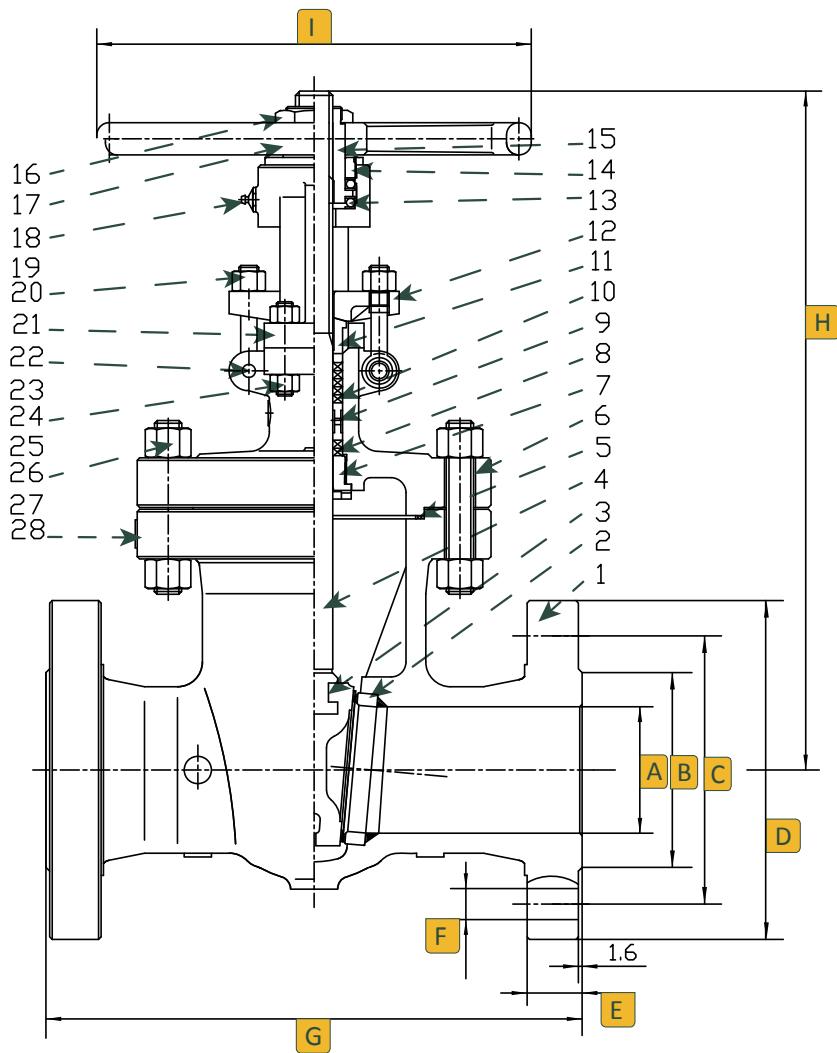


Dimensions (Inches)

Size	A	B	C	D	E	F	G	H	I	Num of Bolt Holes
2	2.00	3.62	5.00	6.50	0.87	0.75	8.50	14.00	7.87	8
2-1/2	2.50	4.12	5.88	7.50	1.00	0.875	9.50	18.11	7.87	8
3	3.00	5.00	6.62	8.25	1.12	0.875	11.12	17.10	9.84	8
4	4.00	6.19	7.88	10.00	1.25	0.875	12.00	19.60	9.84	8
6	6.00	8.50	10.62	12.50	1.44	0.875	15.88	25.80	13.78	12
8	8.00	10.62	13.00	15.00	1.62	1.00	16.50	30.80	15.75	12
10	10.00	12.75	15.25	17.50	1.87	1.125	18.00	36.70	17.72	16
12	12.00	15.00	17.75	20.50	2.00	1.25	19.80	56.30	19.70	16

No.	Part Name	Material
1	Body	Carbon Steel ASTM A216
2	Seat	A105 & STL6
3	Wedge	Carbon Steel & Stainless Steel
4	Stem	A182 - F6a
5	Gasket	304 Stainless Steel & Graphite
6	Bonnet	Carbon Steel ASTM A216
7	Back Seat	410 Stainless Steel
8	Gland Packing	304 Stainless Steel & Graphite
9	Distance Ring	410 Stainless Steel
10	Gland Packing	Flexible Graphite
11	Gland	410 Stainless Steel
12	Gland Flange	Carbon Steel ASTM A216
13	Stem Nut	A439-D2
14	Gland Nut	Carbon Steel
15	Lock Nut	Carbon Steel
16	Handwheel	Ductile Iron
17	Grease Nipple	Carbon Steel
18	Eye Nut	B7 Steel A193
19	Eye Bolt	2H Steel A194
20	Pin	Carbon Steel
21	Bolt	B7 Steel A193
22	Nut	2H Steel A194
23	Name Plate	304 Stainless Steel
24	Rivet	304 Stainless Steel

# 12" - 24" Dimensions, Parts & Materials



Dimensions (Inches)

Size	A	B	C	D	E	F	G	H	I	Num of Bolt Holes
12	12.00	15.00	17.75	20.50	2.00	1.25	19.80	56.30	19.70	16
14	14.00	16.25	20.25	23.00	2.12	1.25	30.00	60.70	22.10	20
16	16.00	18.50	22.50	25.50	2.25	1.375	33.00	68.60	25.20	20
18	18.00	21.00	24.75	28.00	2.37	1.375	36.00	82.20	25.20	24
20	20.00	23.00	27.00	30.50	2.50	1.375	39.00	84.70	28.40	24
24	24.00	27.25	32.00	36.00	2.75	1.625	45.00	104.40	35.40	24

No.	Part Name	Material
1	Body	Carbon Steel ASTM A216
2	Seat	A105 & STL6
3	Wedge	Carbon Steel & Stainless Steel
4	Stem	A182 - F6a
5	Gasket	304 Stainless Steel & Graphite
6	Bonnet	Carbon Steel ASTM A216
7	Back Seat	410 Stainless Steel
8	Gland Packing	304 Stainless Steel & Graphite
9	Distance Ring	410 Stainless Steel
10	Gland Packing	Flexible Graphite
11	Gland	410 Stainless Steel
12	Gland Flange	Carbon Steel ASTM A216
13	Axletree	
14	Gland Nut	Carbon Steel
15	Stem Nut	A439-D2
16	Lock Nut	Carbon Steel
17	Handwheel	Ductile Iron
18	Grease Nipple	Carbon Steel
19	Eye Bolt	2H Steel A194
20	Eye Nut	B7 Steel A193
21	Yoke	Carbon Steel ASTM A216
22	Pin	Carbon Steel
23	Bolt	B7 Steel A193
24	Nut	2H Steel A194
25	Bolt	B7 Steel A193
26	Nut	2H Steel A194
27	Name Plate	304 Stainless Steel
28	Rivet	304 Stainless Steel

Shell Test Water psi	Seat Test Water psi	Seat Test Air psi
1125	814	80

Temperature °F	Working Pressure psi
-20 to 100	285
200	260
300	230
400	200
500	170
600	140
650	125
700	110
750	95
800	80
850	85
900	50
950	35
1000	20

## Ordering

Fig: 8 - 35 - 3 - 1 - 4

Description: 8" - Series 35 - 300# Flange Ends - Carbon Steel

Size	Series	Class		Ends		Body Material		Options	
2	35	3	300	1	Flange	4	Carbon Steel	X	Oxygen Service
2-1/2				2	Buttweld			SF	Silicon Free
3								RTJ	Ring Type Joint Flange
4									
5									
6									
8									
10									
12									
14									
16									
18									
20									
24									



# Series 35614

## 600# Flanged Cast Steel Gate Valve

### Features

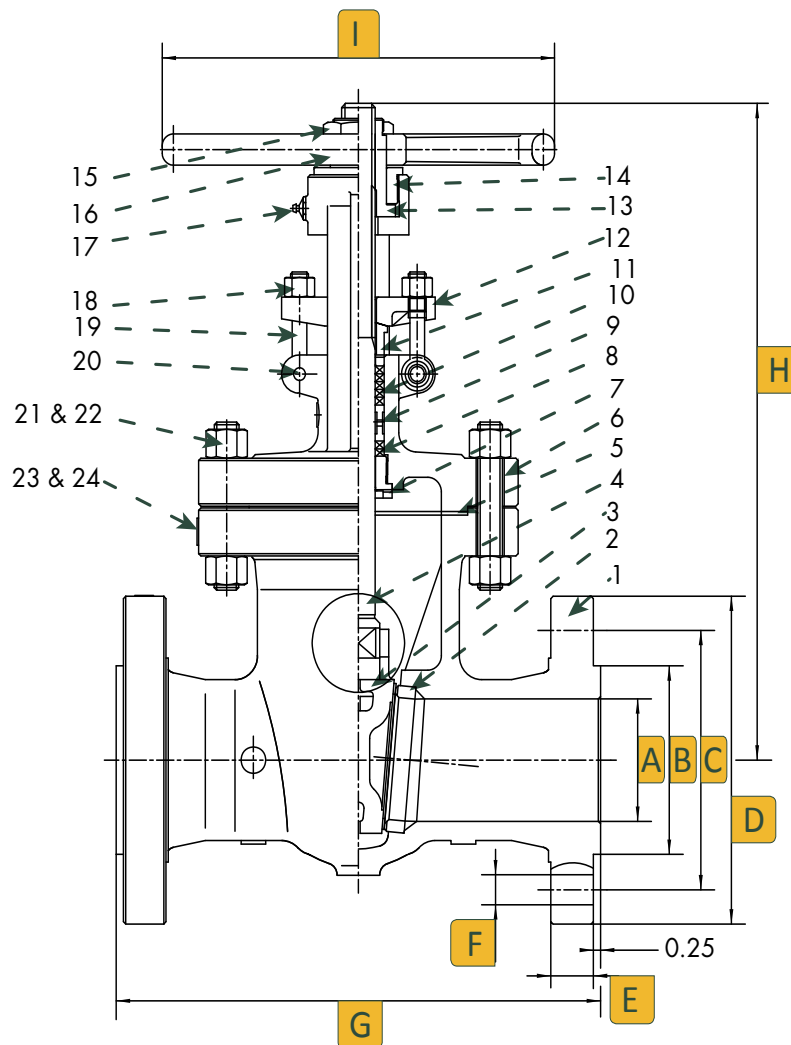
- Full port
- Outside screw and yoke
- Bolted bonnet
- Flexible wedge, fully guided integrated seats
- Rising stem and non-rising hand-wheel
- Applicable Standards:
  - Gate valves API 600
  - Steel valves ANSI B16.34
  - Face to face ANSI B16.10
  - End flanges ANSI B16.5
  - Buttweld ends ANSI B16.25
  - Inspection and test API 598



*Valves, Automation & Controls*



## 2" - 6" Dimensions, Parts & Materials

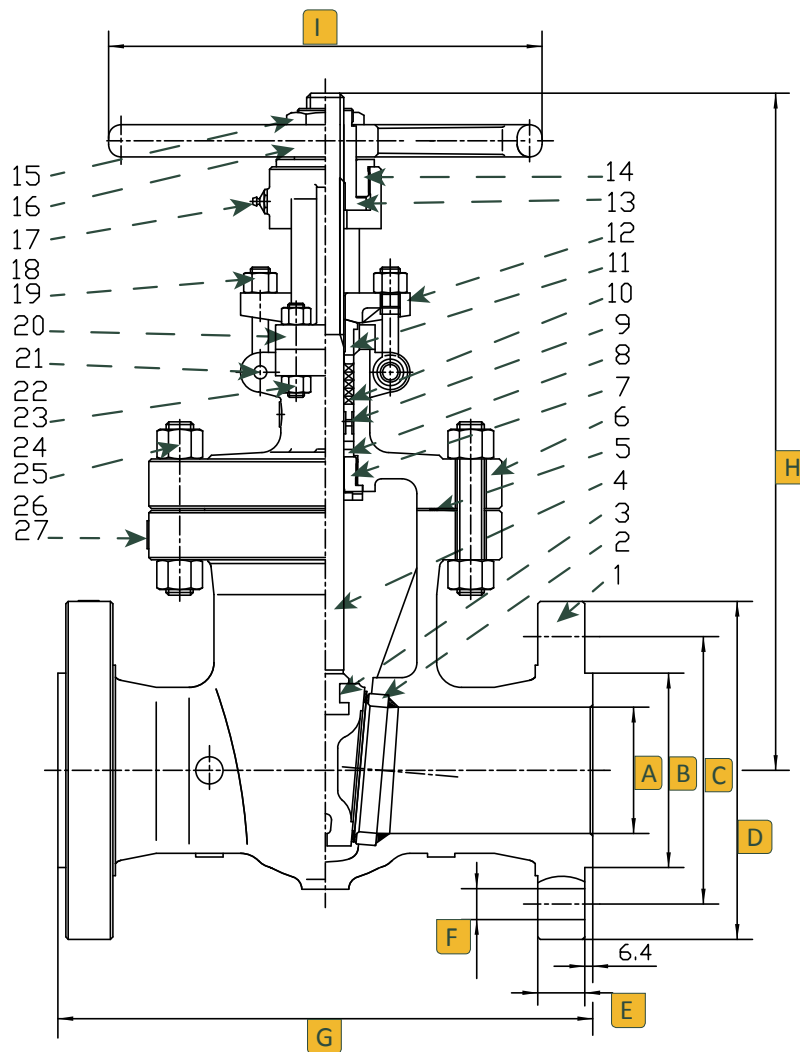


Dimensions (Inches)

Size	A	B	C	D	E	F	G	H	I	Num of Bolt Holes
2	2.00	3.62	5.00	6.50	1.00	0.75	11.50	14.41	9.84	8
2-1/2	2.50	4.12	5.88	7.50	1.12	0.875	13.00	18.62	9.84	8
3	3.00	5.00	6.62	8.25	1.25	0.875	14.00	17.87	11.81	8
4	4.00	6.19	8.50	10.75	1.50	1.00	17.00	26.10	13.78	8
6	6.00	8.50	11.50	14.00	1.88	1.125	22.00	32.80	17.70	12

No.	Part Name	Material
1	Body	Carbon Steel ASTM A216
2	Seat	A105 & STL6
3	Wedge	Carbon Steel & Stainless Steel
4	Stem	A182 - F6a
5	Gasket	304 Stainless Steel & Graphite
6	Bonnet	Carbon Steel ASTM A216
7	Back Seat	410 Stainless Steel
8	Gland Packing	304 Stainless Steel & Graphite
9	Distance Ring	410 Stainless Steel
10	Gland Packing	Flexible Graphite
11	Gland	410 Stainless Steel
12	Gland Flange	Carbon Steel ASTM A216
13	Stem Nut	A439-D2
14	Gland Nut	Carbon Steel
15	Lock Nut	Carbon Steel
16	Handwheel	Ductile Iron
17	Grease Nipple	Carbon Steel
18	Eye Nut	B7 Steel A193
19	Eye Bolt	2H Steel A194
20	Pin	Carbon Steel
21	Bolt	B7 Steel A193
22	Nut	2H Steel A194
23	Name Plate	304 Stainless Steel
24	Rivet	304 Stainless Steel

# 8" - 24" Dimensions, Parts & Materials



Size	A	B	C	D	E	F	G	H	I	Num of Bolt Holes
8	8.00	10.62	13.75	16.50	2.19	1.25	26.00	37.40	19.70	12
10	10.00	12.75	17.00	20.00	2.50	1.375	31.00	52.10	25.20	16
12	12.00	15.00	19.25	22.00	2.62	1.375	33.00	47.44	25.20	20
16	16.00	18.50	23.75	27.00	3.00	1.625	39.00	55.00	28.40	20
18	18.00	21.00	25.75	29.25	3.25	1.75	43.00	65.55	35.40	20
20	20.00	23.00	28.50	32.00	3.50	1.75	47.00	68.98	35.40	24
24	24.00	27.25	33.00	37.00	4.00	2.00	55.00	76.89	35.40	24

No.	Part Name	Material
1	Body	Carbon Steel ASTM A216
2	Seat	A105 & STL6
3	Wedge	Carbon Steel & Stainless Steel
4	Stem	A182 - F6a
5	Gasket	304 Stainless Steel & Graphite
6	Bonnet	Carbon Steel ASTM A216
7	Back Seat	410 Stainless Steel
8	Gland Packing	304 Stainless Steel & Graphite
9	Distance Ring	410 Stainless Steel
10	Gland Packing	Flexible Graphite
11	Gland	410 Stainless Steel
12	Gland Flange	Carbon Steel ASTM A216
13	Stem Nut	A439-D2
14	Gland Nut	Carbon Steel
15	Lock Nut	Carbon Steel
16	Handwheel	Ductile Iron
17	Grease Nipple	Carbon Steel
18	Eye Bolt	2H Steel A194
19	Eye Nut	B7 Steel A193
20	Yoke	Carbon Steel ASTM A216
21	Pin	Carbon Steel
22	Bolt	B7 Steel A193
23	Nut	2H Steel A194
24	Bolt	B7 Steel A193
25	Nut	2H Steel A194
26	Name Plate	304 Stainless Steel
27	Rivet	304 Stainless Steel

Shell Test Water psi	Seat Test Water psi	Seat Test Air psi
1125	814	80

Temperature °F	Working Pressure psi
-20 to 100	285
200	260
300	230
400	200
500	170
600	140
650	125
700	110
750	95
800	80
850	85
900	50
950	35
1000	20

## Ordering

Fig: 8 - 35 - 6 - 1 - 4

Description: 8" - Series 35 - 600# Flange Ends - Carbon Steel

Size	Series	Class		Ends		Body Material		Options	
2	35	6	600	1	Flange Buttweld	4	Carbon Steel	X	Oxygen Service
2-1/2				2				SF	Silicon Free
3								RTJ	Ring Type Joint Flange
4									
5									
6									
8									
10									
12									
14									
16									
18									
20									
24									

# Series 35116

## 150# Flanged Stainless Steel Gate Valve

### Features

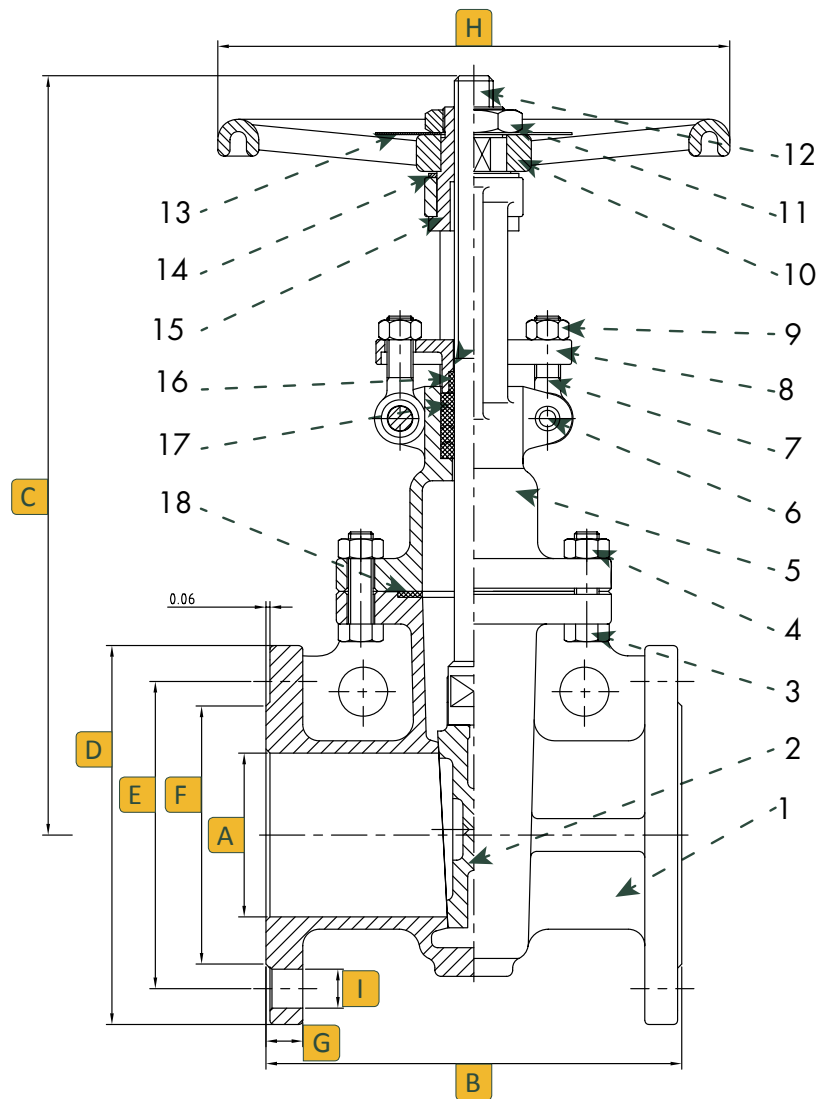
- Outside screw and yoke
- Bolted bonnet
- Flexible wedge, fully guided integrated seats
- Rising stem and non-rising hand-wheel
- Applicable Standards:
  - Gate valves API 603
  - Steel valves ANSI B16.34
  - Face to face ANSI B16.10
  - End flanges ANSI B16.5
  - Buttweld ends ANSI B16.25
  - Inspection and test API 598



*Valves, Automation & Controls*



# 1/2" - 12" Dimensions, Parts & Materials

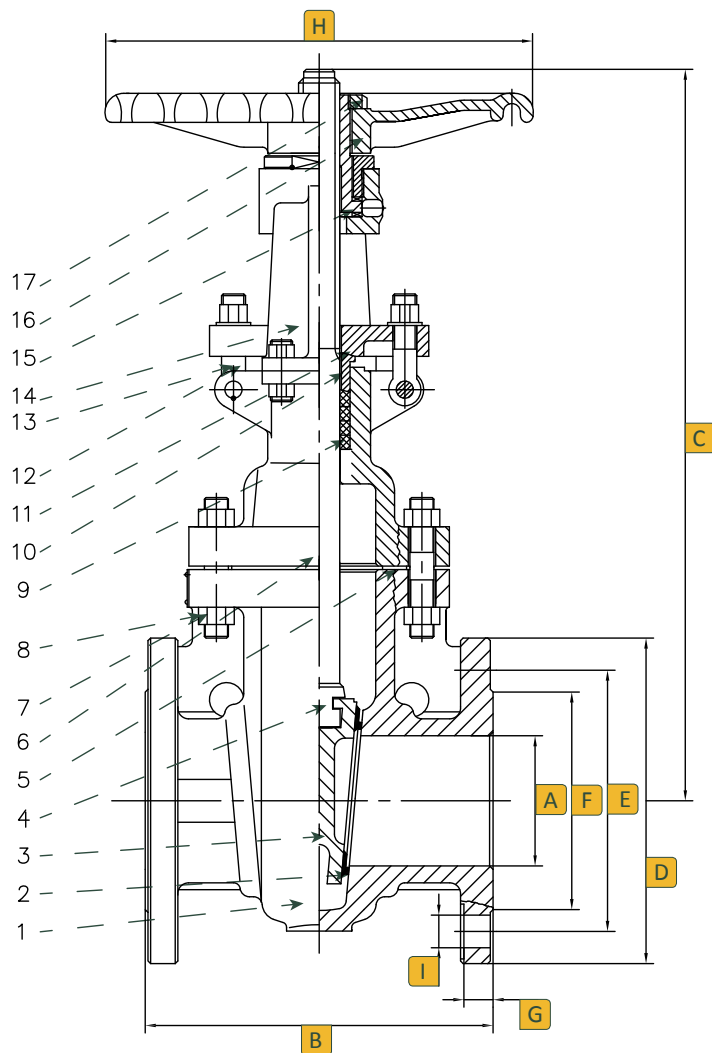


Dimensions (Inches)

Size	A	B	C	D	E	F	G	H	I	Num of Bolt Holes
1/2	0.59	4.25	7.50	3.50	2.38	1.38	0.48	4.72	0.62	4
3/4	0.79	4.61	7.68	3.88	2.75	1.69	0.48	4.72	0.62	4
1	0.98	5.00	9.21	4.25	3.12	2.00	0.48	4.72	0.62	4
1-1/2	1.57	6.50	11.57	5.00	3.88	2.88	0.56	7.87	0.62	4
2	1.97	7.01	13.03	6.00	4.75	3.62	0.62	7.87	0.75	4
2-1/2	2.56	7.48	15.47	7.00	5.50	4.12	0.69	7.87	0.75	4
3	3.15	7.99	18.50	7.50	6.00	5.00	0.75	9.84	0.75	4
4	3.94	9.02	21.45	9.00	7.50	6.19	0.94	9.84	0.75	8
5	4.92	10.00	25.20	10.00	8.50	7.31	0.94	11.81	0.88	8
6	5.91	10.51	29.13	11.00	9.50	8.50	1.00	11.81	0.88	8
8	7.87	11.50	35.83	13.50	11.75	10.62	1.12	13.78	0.88	8
10	9.84	12.99	43.19	16.00	14.25	12.75	1.19	15.75	1.00	12
12	11.81	14.02	50.59	19.00	17.00	15.00	1.25	15.75	1.00	12

No.	Part Name	Qty	Material
1	Body	1	316 Stainless Steel
2	Disc	1	316 Stainless Steel
3	Bonnet Bolt	1	304 Stainless Steel
4	Bonnet Nut	1	304 Stainless Steel
5	Bonnet	1	316 Stainless Steel
6	Hinge Pin	1	304 Stainless Steel
7	Eye Bolt	1	304 Stainless Steel
8	Gland	1	316 Stainless Steel
9	Eye Nut	1	304 Stainless Steel
10	Hand Wheel	1	Carbon Steel
11	Nut	1	Brass
12	Stem	1	316 Stainless Steel
13	Name Plate	1	304 Stainless Steel
14	Spring	1	Brass
15	Yoke Sleeve	1	Brass
16	Gland Packing	1	PTFE
17	Packing	1	PTFE
18	Gasket	1	15%R + PTFE

# 14" - 24" Dimensions, Parts & Materials



Size	A	B	C	D	E	F	G	H	I	Num of Bolt Holes
14	13.27	15.00	59.65	21.00	18.75	18.75	1.38	19.69	1.125	12
16	15.24	16.00	67.76	23.50	21.25	21.25	1.44	19.69	1.125	16
18	17.24	17.00	74.92	25.00	22.75	22.75	1.56	23.62	1.125	16
20	19.25	18.00	82.83	27.50	25.00	25.00	1.69	23.62	1.125	20
24	23.27	20.00	99.02	32.00	29.50	29.50	1.88	27.56	1.125	20

No.	Part Name	Material
1	Body	316 Stainless Steel
2	Seal Face	316 Stainless Steel
3	Wedge	316 Stainless Steel
4	Stem	316 Stainless Steel
5	Gasket	Solid Metal Serrated Gasket
6	Bonnet	316 Stainless Steel
7	Bonnet Bolt	B8 A193
8	Bonnet Nut	Gr. 8 A194
9	Stem Packing	Graphite
10	Gland	316 Stainless Steel
11	Gland Flange	CF8 A351
12	Gland Eyebolt	B8 A193
13	Gland Nut	Gr. 8 A194
14	Yoke	316 Stainless Steel
15	Stem Nut	Steel
16	Hand Wheel	Ductile Iron
17	Lock Nut	ANSI 1020

Shell Test Water	Seat Test Water	Seat Test Air
450 psi	314 psi	80 psi

Temperature °F	Working Pressure psi
-20 to 100	285
200	260
300	230
400	200
500	170
600	140
650	125
700	110
750	95
800	80
850	85
900	50
950	35
1000	20

## Ordering

Fig: 8 - 35 - 1 - 1 - 6

Description: 8" - Series 35 - 150# Flange Ends - Stainless Steel

Size	Series	Class		Ends		Body Material		Options	
1/2	35	1	150 Flange	1	Flange Butt weld	6	316 Stainless Steel	X	Oxygen Service
3/4				2				SF	Silicon Free
1								RTJ	Ring Type Joint Flange
1-1/2									
2									
2-1/2									
3									
4									
5									
6									
8									
10									
12									
14									
16									
18									
20									
24									



# Series 35316

## 300# Flanged Stainless Steel Gate Valve

### Features

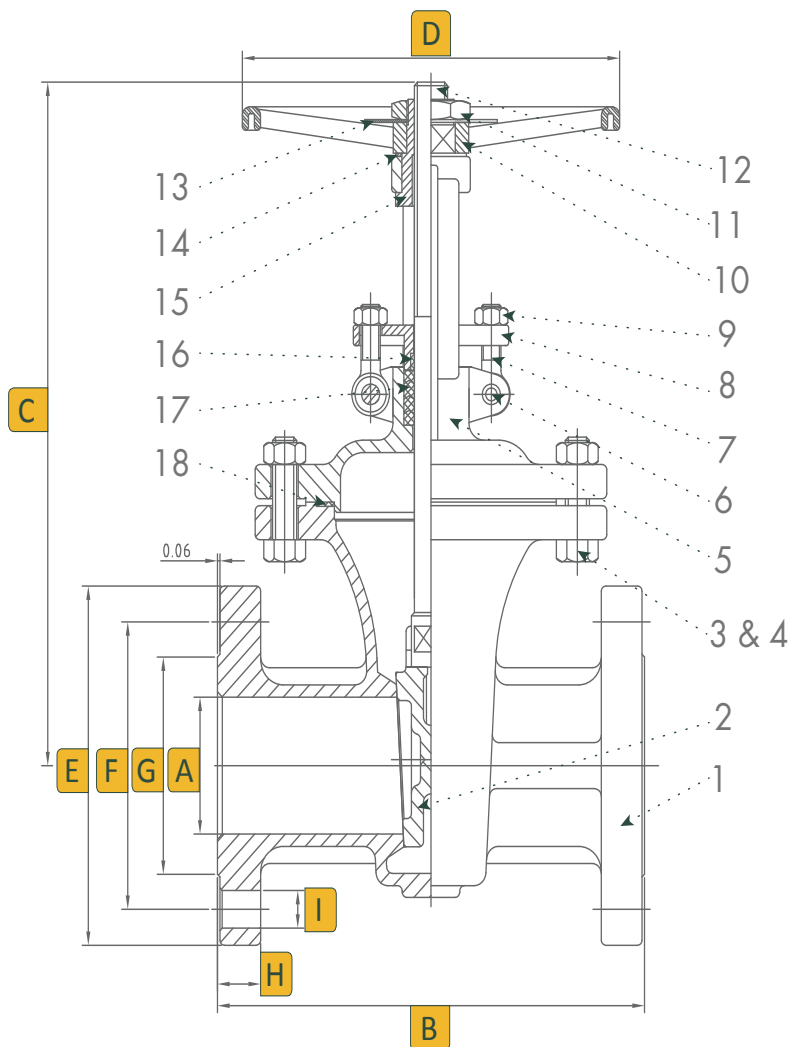
- Full port
- Outside screw and yoke
- Bolted bonnet
- Flexible wedge, fully guided integrated seats
- Rising stem and non-rising hand-wheel
- Applicable Standards:
  - Steel valves ANSI B16.34
  - Face to face ANSI B16.10
  - End flanges ANSI B16.5
  - Buttweld ends ANSI B16.25
  - Inspection and test API 598



*Valves, Automation & Controls*



## 2" - 12" Dimensions, Parts & Materials

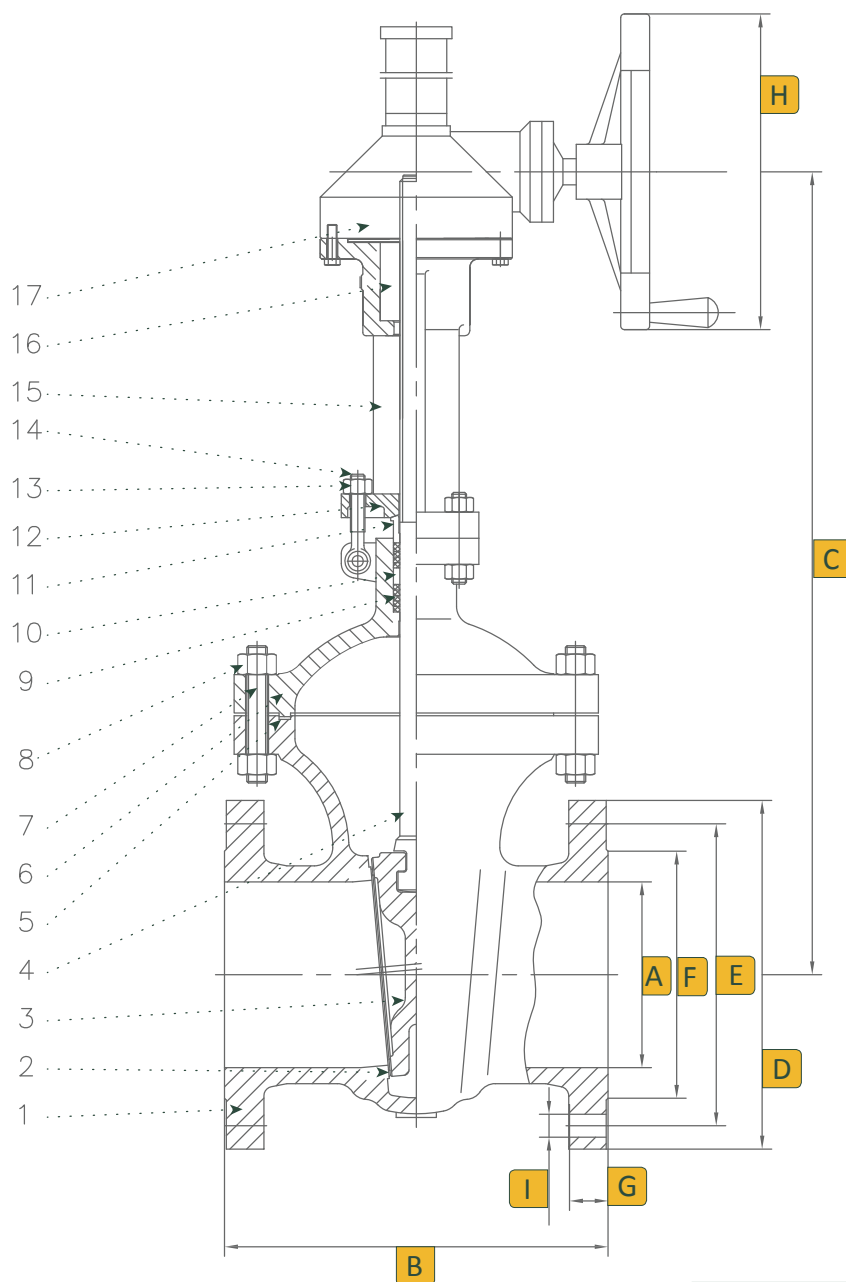


Dimensions (Inches)

Size	A	B	C	D	E	F	G	H	I	Num of Bolt Holes
2	2	11.50	14.6	5.75	6.50	5	3.62	1	.75	8
2-1/2	2.5	13.00	18.45	9.85	9.85	7.5	4.12	1.12	0.88	8
3	3	14.00	18.70	11.85	8.25	6.62	5	1.25	0.88	8
4	4	17.00	18.70	13.80	10.75	8.50	6.18	1.50	1	8
6	6	22	28.30	35.20	14	11.50	8.50	1.88	1.12	12
8	7.88	25.6	33.78	19.70	16.50	13.75	10.62	2.19	1.25	12
10	9.75	31.00	39.34	27.60	20	17	12.75	2.50	1.38	16
12	11.75	33.00	46.20	31.50	22	19.25	15	2.63	1.38	20

No.	Part Name	Qty	Material
1	Body	1	316 Stainless Steel
2	Disc	1	316 Stainless Steel
3	Bonnet Bolt	1	304 Stainless Steel
4	Bonnet Nut	1	304 Stainless Steel
5	Bonnet	1	316 Stainless Steel
6	Hinge Pin	1	304 Stainless Steel
7	Eye Bolt	1	304 Stainless Steel
8	Gland	1	316 Stainless Steel
9	Eye Nut	1	304 Stainless Steel
10	Hand Wheel	1	Carbon Steel
11	Nut	1	Brass
12	Stem	1	316 Stainless Steel
13	Name Plate	1	304 Stainless Steel
14	Spring	1	Brass
15	Yoke Sleeve	1	Brass
16	Gland Packing	1	PTFE
17	Packing	1	PTFE
18	Gasket	1	304 + Graphite

# 14" - 20" Dimensions, Parts & Materials



Size	A	B	C	D	E	F	G	H	I	Num of Bolt Holes
14	13.27	30.00	47.36	23.00	20.25	16.25	2.12	18.11	1-1/4	20
16	15.24	33.00	54.88	25.50	22.50	18.50	2.25	18.11	1-3/8	20
18	17.01	36.00	58.94	28.00	24.75	20.98	2.38	18.11	1-3/8	24
20	19.02	39.00	64.65	30.50	27.00	22.99	2.50	23.62	1-3/8	24
24	22.99	45.00	77.80	36.00	32.00	27.24	2.75	23.62	1-3/8	24

No.	Part Name	Material
1	Body	316 Stainless Steel
2	Seal Face	316 Stainless Steel
3	Wedge	316 Stainless Steel
4	Stem	316 Stainless Steel
5	Gasket	Solid Metal Serrated Gasket
6	Bonnet	316 Stainless Steel
7	Bonnet Bolt	B8 A193
8	Bonnet Nut	Gr. 8 A194
9	Stem Packing	Graphite
10	Gland	316 Stainless Steel
11	Gland Flange	CF8 A351
12	Gland Eyebolt	B8 A193
13	Gland Nut	Gr. 8 A194
14	Yoke	316 Stainless Steel
15	Stem Nut	Steel
16	Hand Wheel	Ductile Iron
17	Lock Nut	ANSI 1020

Shell Test Water psi	Seat Test Water psi	Seat Test Air psi
1125	814	80

Temperature °F	Working Pressure psi
-20 to 100	285
200	260
300	230
400	200
500	170
600	140
650	125
700	110
750	95
800	80
850	85
900	50
950	35
1000	20

## Ordering

Fig: 8 - 35 - 3 - 1 - 6

Description: 8" - Series 35 - 300# Flange Ends - Stainless Steel

Size	Series	Class		Ends		Body Material		Options	
1/2	35	3	300	1	Flange	6	316 Stainless Steel	X	Oxygen Service
3/4				2	Buttweld			SF	Silicon Free
1								RTJ	Ring Type Joint Flange
1-1/2									
2									
2-1/2									
3									
4									
5									
6									
8									
10									
12									
14									
16									
18									
20									
24									

# Series 45114

## 150# Flanged Cast Steel Globe Valve

### Features

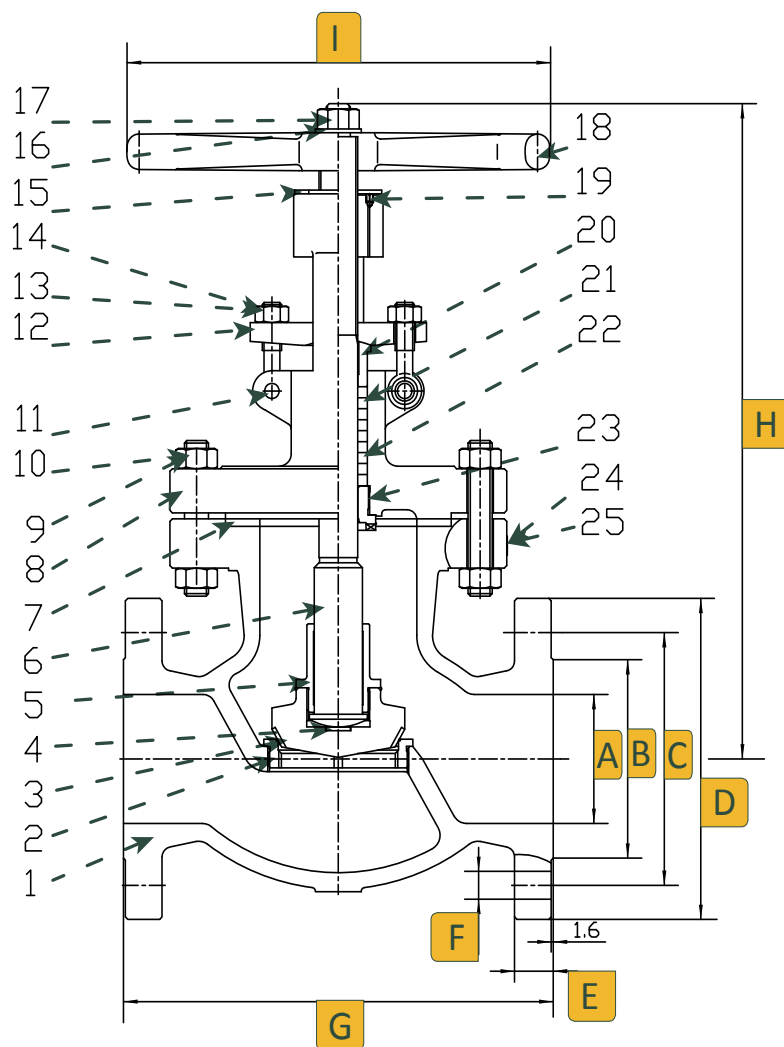
- Outside screw and yoke
- Bolted bonnet
- Stem / Wedge Connection meets API 600 Pull Test
- Welded Seat
- Yoke Integrated with Bonnet
- Lose Disc
- Renewable Seat Rings
- Flexible wedge, fully guided integrated seats
- Rising stem and non-rising hand-wheel
- Applicable Standards:
  - Steel valves ANSI B16.34
  - Face to face ANSI B16.10
  - End flanges ANSI B16.5
  - Buttweld ends ANSI B16.25
  - Inspection and test API 598



*Valves, Automation & Controls*



## 2" - 6" Dimensions, Parts & Materials

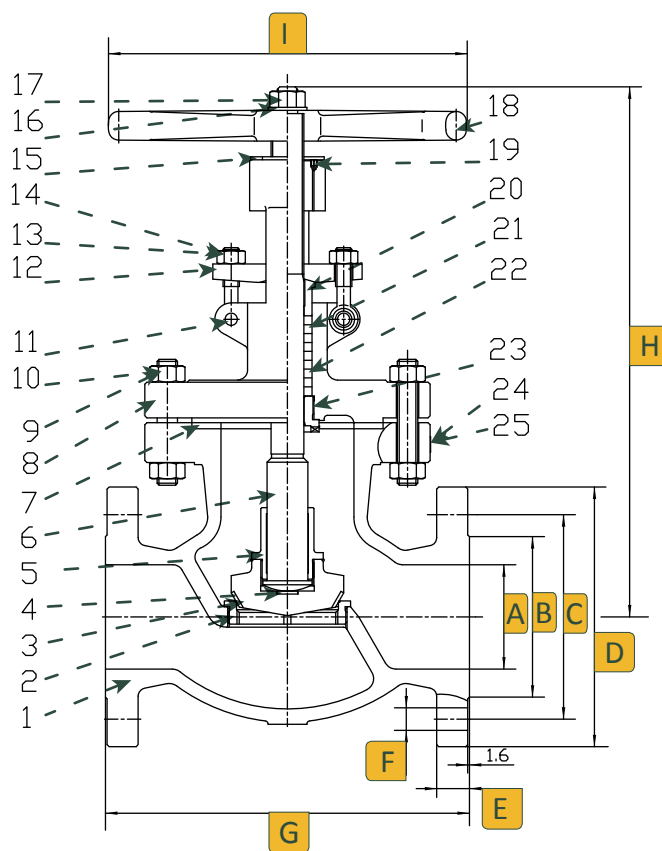


Dimensions (Inches)

Size	A	B	C	D	E	F	G	H	I	Num of Bolt Holes
2	2.01	3.62	4.76	6.00	0.62	0.75	8.00	13.43	7.87	4
2-1/2	2.52	4.13	5.51	7.00	0.68	0.75	8.50	14.45	9.84	4
3	2.99	5.00	6.00	7.50	0.75	0.75	9.50	14.76	9.84	4
4	4.02	6.18	7.50	9.00	0.94	0.75	11.50	19.02	11.81	8
6	6.00	8.50	9.50	11.00	1.00	0.875	16.00	20.35	13.78	8

No.	Part Name	Qty	Material
1	Body	1	Carbon Steel ASTM A216
2	Seat	1	A105 & STL6
3	Disc	1	A105 & 410 Stainless Steel
4	Thrust Plate	1	410 Stainless Steel
5	Disc Cover	1	410 Stainless Steel
6	Stem	1	A182 F6a
7	Gasket	1	304 Stainless Steel & Flexible Graphite
8	Bonnet	1	Carbon Steel ASTM A216
9	Bolt	1	B7 Steel A193
10	Nut	1	2H Steel A194
11	Pin	1	Carbon Steel
12	Gland Flange	1	Carbon Steel
13	Eye Bolt	1	B7 Steel A193
14	Eye Nut	1	2H Steel A194
15	Stem Nut	1	D-2
16	Gasket	1	410 Stainless Steel
17	Nut	1	Carbon Steel
18	Handwheel	1	Ductile Iron
19	Screw	1	Carbon Steel
20	Gland	1	410 Stainless Steel
21	Packing	1	304 Stainless Steel & Graphite
22	Packing	1	Flexible Graphite
23	Back Seat	1	410 Stainless Steel
24	Rivet	1	304 Stainless Steel
25	Name Plate	1	304 Stainless Steel

# 8" - 16" Dimensions, Parts & Materials



Size	A	B	C	D	E	F	G	H	I	Num of Bolt Holes
8	8.00	10.62	11.75	13.50	1.12	0.875	19.50	23.20	15.75	8
10	10.00	12.75	14.25	16.00	1.18	1.00	24.50	29.70	17.72	12
12	12.00	15.00	17.00	19.00	1.25	1.00	27.50	37.10	19.70	12
14	14.00	16.25	18.75	21.00	1.37	1.125	31.00	37.40	22.00	12
16	16.00	18.50	21.25	23.50	1.44	1.125	36.00	38.00	25.20	16

No.	Part Name	Qty	Material
1	Body	1	Carbon Steel ASTM A216
2	Seat	1	A105 & STL.6
3	Disc	1	A105 & 410 Stainless Steel
4	Disc Cover	1	410 Stainless Steel
5	Stem	1	A182 F6a
6	Gasket	1	304 Stainless Steel & Flexible Graphite
7	Bonnet	1	Carbon Steel ASTM A216
8	Bolt	1	B7 Steel A193
9	Nut	1	2H Steel A194
10	Pin	1	Carbon Steel
11	Gland Flange	1	Carbon Steel
12	Eye Bolt	1	B7 Steel A193
13	Eye Nut	1	2H Steel A194
14	Stem Nut	1	D-2
15	Gasket	1	410 Stainless Steel
16	Nut	1	Carbon Steel
17	Handwheel	1	Ductile Iron
18	Screw	1	Carbon Steel
19	Gland	1	410 Stainless Steel
20	Packing	1	304 Stainless Steel & Graphite
21	Packing	1	Flexible Graphite
22	Back Seat	1	410 Stainless Steel
23	Rivet	1	304 Stainless Steel
24	Name Plate	1	304 Stainless Steel

Shell Test Water psi	Seat Test Water psi	Seat Test Air psi
450	314	80

Temperature °F	Working Pressure psi
-20 to 100	285
200	260
300	230
400	200
500	170
600	140
650	125
700	110
750	95
800	80
850	85
900	50
950	35
1000	20

## Ordering

Fig: 8 - 45 - 1 - 1 - 4

Description: 8" - Series 45 - 150# Flange Ends - Carbon Steel

Size	Series	Class		Ends		Body Material		Options	
2	45	1	150	1	Flange	4	Carbon Steel	X	Oxygen Service
2-1/2				2	Buttweld			SF	Silicon Free
3								RTJ	Ring Type Joint Flange
4									
6									
8									
10									
12									
14									
16									

Due to continuous development of our product range, we reserve the right to change the dimensions and information for this product as required.



# Series 45314

## 300# Flanged Cast Steel Globe Valve

### Features

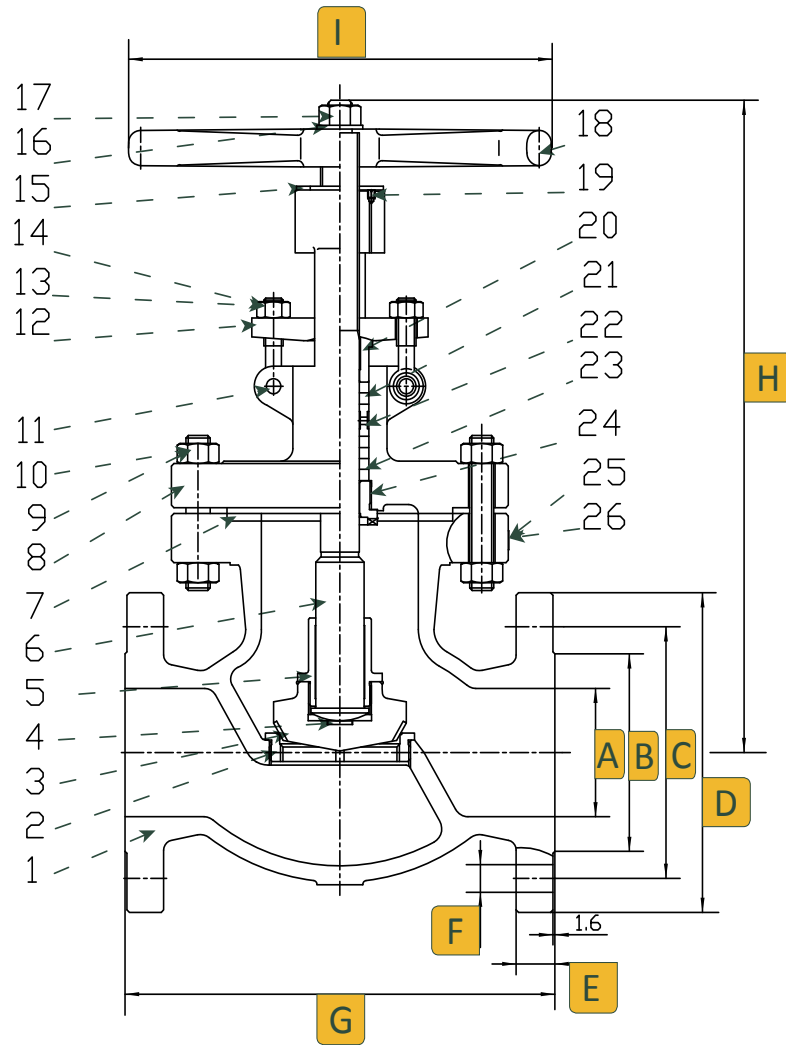
- Outside screw and yoke
- Bolted bonnet
- Stem / Wedge Connection meets API 600 Pull Test
- Welded Seat
- Yoke Integrated with Bonnet
- Lose Disc
- Renewable Seat Rings
- Flexible wedge, fully guided integrated seats
- Rising stem and non-rising hand-wheel
- Applicable Standards:
  - Steel valves ANSI B16.34
  - Face to face ANSI B16.10
  - End flanges ANSI B16.5
  - Buttweld ends ANSI B16.25
  - Inspection and test API 598



*Valves, Automation & Controls*



## 2" - 6" Dimensions, Parts & Materials

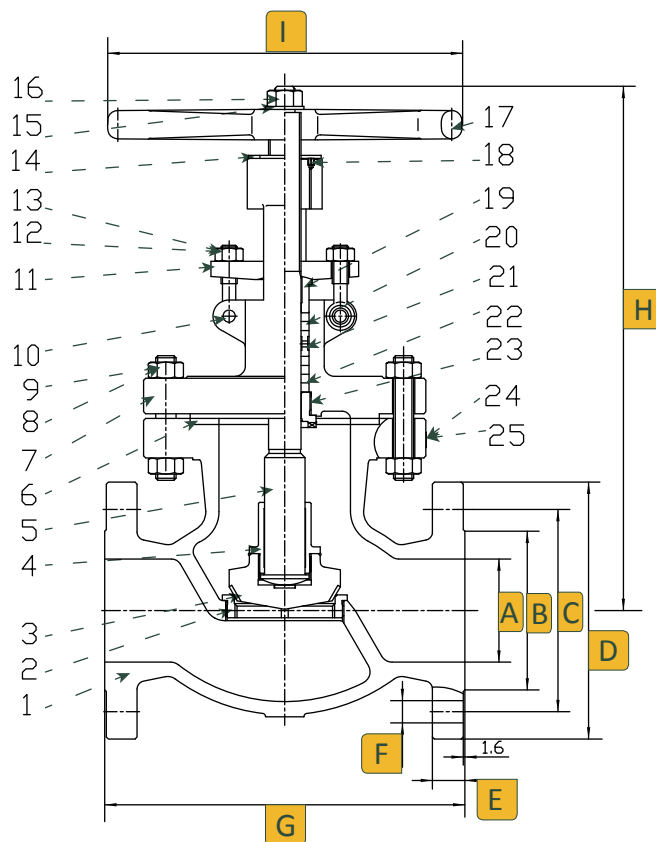


Dimensions (Inches)

Size	A	B	C	D	E	F	G	H	I	Num of Bolt Holes
2	2.00	3.62	5.00	6.50	0.87	0.75	10.50	13.74	7.87	8
2-1/2	2.50	4.12	5.88	7.50	1.00	0.875	11.50	15.35	9.84	8
3	3.00	5.00	6.62	8.25	1.12	0.875	12.50	16.93	9.84	8
4	4.00	6.19	7.88	10.00	1.25	0.875	14.00	19.13	11.80	8
6	6.00	8.50	10.62	12.50	1.44	0.875	17.50	24.33	15.75	12

No.	Part Name	Qty	Material
1	Body	1	Carbon Steel ASTM A216
2	Seat	1	A105 & STL6
3	Disc	1	A105 & 410 Stainless Steel
4	Thrust Plate	1	410 Stainless Steel
5	Disc Cover	1	410 Stainless Steel
6	Stem	1	A182 F6a
7	Gasket	1	304 Stainless Steel & Flexible Graphite
8	Bonnet	1	Carbon Steel ASTM A216
9	Bolt	1	B7 Steel A193
10	Nut	1	2H Steel A194
11	Pin	1	Carbon Steel
12	Gland Flange	1	Carbon Steel
13	Eye Bolt	1	B7 Steel A193
14	Eye Nut	1	2H Steel A194
15	Stem Nut	1	D-2
16	Gasket	1	410 Stainless Steel
17	Nut	1	Carbon Steel
18	Handwheel	1	Ductile Iron
19	Screw	1	Carbon Steel
20	Gland	1	410 Stainless Steel
21	Packing	1	304 Stainless Steel & Graphite
22	Distance Ring	1	410 Stainless Steel
23	Packing	1	Flexible Graphite
24	Back Seat	1	410 Stainless Steel
25	Rivet	1	304 Stainless Steel
26	Name Plate	1	304 Stainless Steel

# 8" - 16" Dimensions, Parts & Materials



Size	A	B	C	D	E	F	G	H	I	Num of Bolt Holes
8	8.00	10.62	13.00	15.00	1.62	1.00	22.00	36.90	19.70	12
10	10.00	12.75	15.25	17.50	1.87	1.125	24.50	37.40	22.10	16
12	12.00	15.00	17.75	20.50	2.00	1.25	28.00	39.20	22.10	16
14	14.00	16.25	20.25	23.00	2.12	1.25	33.00	39.60	25.20	20
16	16.00	18.50	22.50	25.50	2.25	1.375	34.00	40.40	25.20	20

No.	Part Name	Qty	Material
1	Body	1	Carbon Steel ASTM A216
2	Seat	1	A105 & STL6
3	Disc	1	A105 & 410 Stainless Steel
4	Thrust Plate	1	410 Stainless Steel
5	Disc Cover	1	410 Stainless Steel
6	Stem	1	A182 F6a
7	Gasket	1	304 Stainless Steel & Flexible Graphite
8	Bonnet	1	Carbon Steel ASTM A216
9	Bolt	1	B7 Steel A193
10	Nut	1	2H Steel A194
11	Pin	1	Carbon Steel
12	Gland Flange	1	Carbon Steel
13	Eye Bolt	1	B7 Steel A193
14	Eye Nut	1	2H Steel A194
15	Stem Nut	1	D-2
16	Gasket	1	410 Stainless Steel
17	Nut	1	Carbon Steel
18	Handwheel	1	Ductile Iron
19	Screw	1	Carbon Steel
20	Gland	1	410 Stainless Steel
21	Packing	1	304 Stainless Steel & Graphite
22	Distance Ring	1	410 Stainless Steel
23	Packing	1	Flexible Graphite
24	Back Seat	1	410 Stainless Steel
25	Rivet	1	304 Stainless Steel
26	Name Plate	1	304 Stainless Steel

Shell Test Water psi	Seat Test Water psi	Seat Test Air psi
1125	814	80

Temperature °F	Working Pressure psi
-20 to 100	285
200	260
300	230
400	200
500	170
600	140
650	125
700	110
750	95
800	80
850	85
900	50
950	35
1000	20

## Ordering

Fig: 8 - 45 - 3 - 1 - 4

Description: 8" - Series 45 - 300# Flange Ends - Carbon Steel

Size	Series	Class	Ends	Body Material	Options
2	45	3 300	1 Flange	4 Carbon Steel	X Oxygen Service
2-1/2			2 Buttweld		SF Silicon Free
3					RTJ Ring Type Joint Flange
4					
6					
8					
10					
12					
14					
16					

# Series 45614

## 600# Flanged Cast Steel Globe Valve

### Features

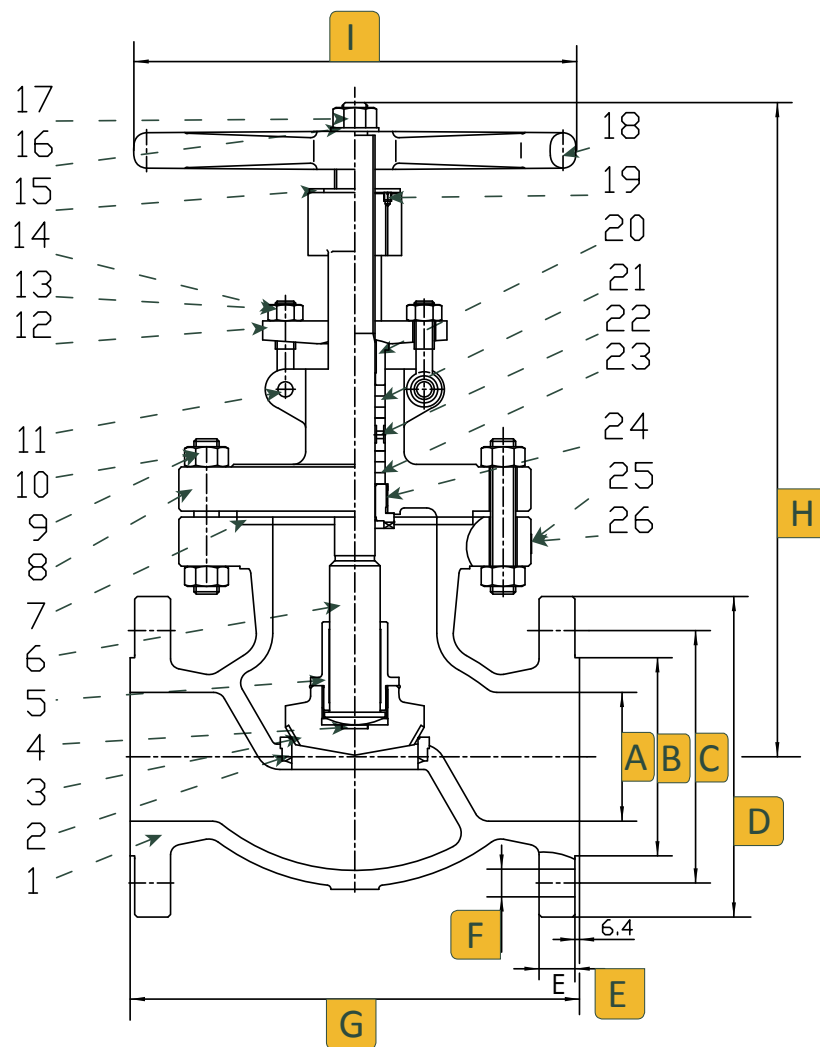
- Outside screw and yoke
- Bolted bonnet
- Stem / Wedge Connection meets API 600 Pull Test
- Welded Seat
- Yoke Integrated with Bonnet
- Lose Disc
- Renewable Seat Rings
- Flexible wedge, fully guided integrated seats
- Rising stem and non-rising hand-wheel
- Applicable Standards:
  - Steel valves ANSI B16.34
  - Face to face ANSI B16.10
  - End flanges ANSI B16.5
  - Buttweld ends ANSI B16.25
  - Inspection and test API 598



*Valves, Automation & Controls*



## 2" - 6" Dimensions, Parts & Materials

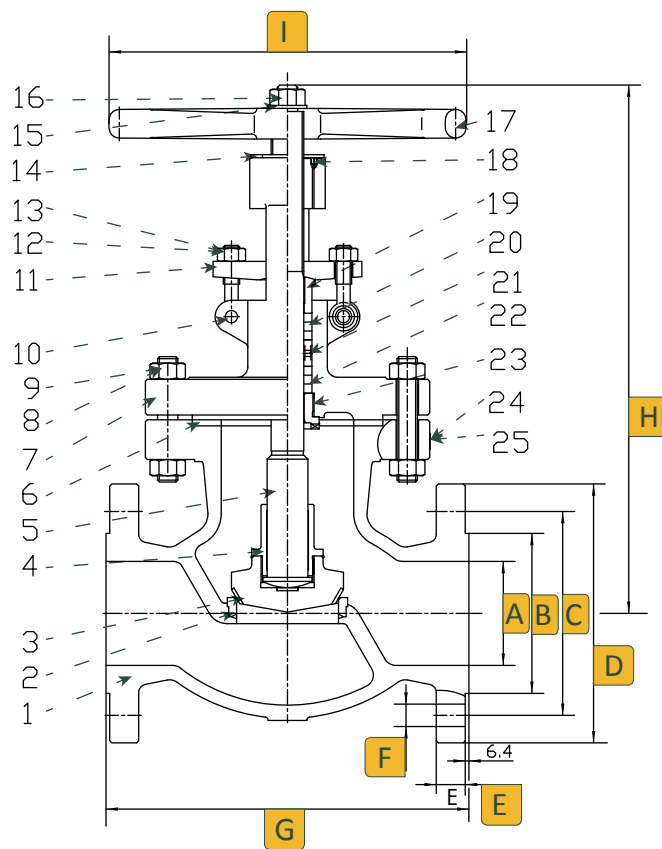


Dimensions (Inches)

Size	A	B	C	D	E	F	G	H	I	Num of Bolt Holes
2	2.00	3.62	5.00	6.50	1.00	0.75	11.50	14.65	9.84	8
2-1/2	2.50	5.00	6.62	8.25	1.25	0.875	14.00	20.50	13.78	8
3	3.00	6.19	8.50	10.75	1.50	1.00	17.00	24.40	15.70	8
4	4.00	7.31	10.50	13.00	1.75	1.125	20.00	25.94	31.85	8
6	6.00	8.50	11.50	14.00	1.89	1.125	22.00	24.33	31.85	12

No.	Part Name	Material
1	Body	Carbon Steel ASTM A216
2	Seat	A105 & STL6
3	Disc	A105 & 410 Stainless Steel
4	Thrust Plate	410 Stainless Steel
5	Disc Cover	410 Stainless Steel
6	Stem	A182 F6a
7	Gasket	304 Stainless Steel & Flexible Graphite
8	Bonnet	Carbon Steel ASTM A216
9	Bolt	B7 Steel A193
10	Nut	2H Steel A194
11	Pin	Carbon Steel
12	Gland Flange	Carbon Steel
13	Eye Bolt	B7 Steel A193
14	Eye Nut	2H Steel A194
15	Stem Nut	D-2
16	Gasket	410 Stainless Steel
17	Nut	Carbon Steel
18	Handwheel	Ductile Iron
19	Screw	Carbon Steel
20	Gland	410 Stainless Steel
21	Packing	304 Stainless Steel & Graphite
22	Distance Ring	410 Stainless Steel
23	Packing	Flexible Graphite
24	Back Seat	410 Stainless Steel
25	Rivet	304 Stainless Steel
26	Name Plate	304 Stainless Steel

# 8" - 12" Dimensions, Parts & Materials



Size	A	B	C	D	E	F	G	H	I	Num of Bolt Holes
8	8.00	10.62	13.75	16.50	2.19	1.25	26.00	36.70	22.10	12
10	10.00	12.75	17.00	20.00	2.50	1.375	31.00	35.60	25.20	16
12	12.00	15.00	19.25	22.00	2.62	1.375	33.00	44.20	27.60	20

No.	Part Name	Qty	Material
1	Body	1	Carbon Steel ASTM A216
2	Seat	1	A105 & STL6
3	Disc	1	A105 & 410 Stainless Steel
4	Disc Cover	1	410 Stainless Steel
5	Stem	1	A182 F6a
6	Gasket	1	304 Stainless Steel & Flexible Graphite
7	Bonnet	1	Carbon Steel ASTM A216
8	Bolt	1	B7 Steel A193
9	Nut	1	2H Steel A194
10	Pin	1	Carbon Steel
11	Gland Flange	1	Carbon Steel
12	Eye Bolt	1	B7 Steel A193
13	Eye Nut	1	2H Steel A194
14	Stem Nut	1	D-2
15	Gasket	1	410 Stainless Steel
16	Nut	1	Carbon Steel
17	Handwheel	1	Ductile Iron
18	Screw	1	Carbon Steel
19	Gland	1	410 Stainless Steel
20	Packing	1	304 Stainless Steel & Graphite
21	Distance Ring	1	410 Stainless Steel
22	Packing	1	Flexible Graphite
23	Back Seat	1	410 Stainless Steel
24	Rivet	1	304 Stainless Steel
25	Name Plate	1	304 Stainless Steel

Shell Test Water psi	Seat Test Water psi	Seat Test Air psi
2250	1628	80

Temperature °F	Working Pressure psi
-20 to 100	285
200	260
300	230
400	200
500	170
600	140
650	125
700	110
750	95
800	80
850	85
900	50
950	35
1000	20

## Ordering

Fig: 8 - 45 - 6 - 1 - 4

Description: 8" - Series 45 - 600# Flange Ends - Carbon Steel

Size	Series	Class		Ends		Body Material		Options	
2	45	6	600	1	Flange	4	Carbon Steel	X	Oxygen Service
2-1/2				2	Buttweld			SF	Silicon Free
3								RTJ	Ring Type Joint Flange
4									
6									
8									
10									
12									



# Series 45116

## 150# Flanged Stainless Steel Globe Valve

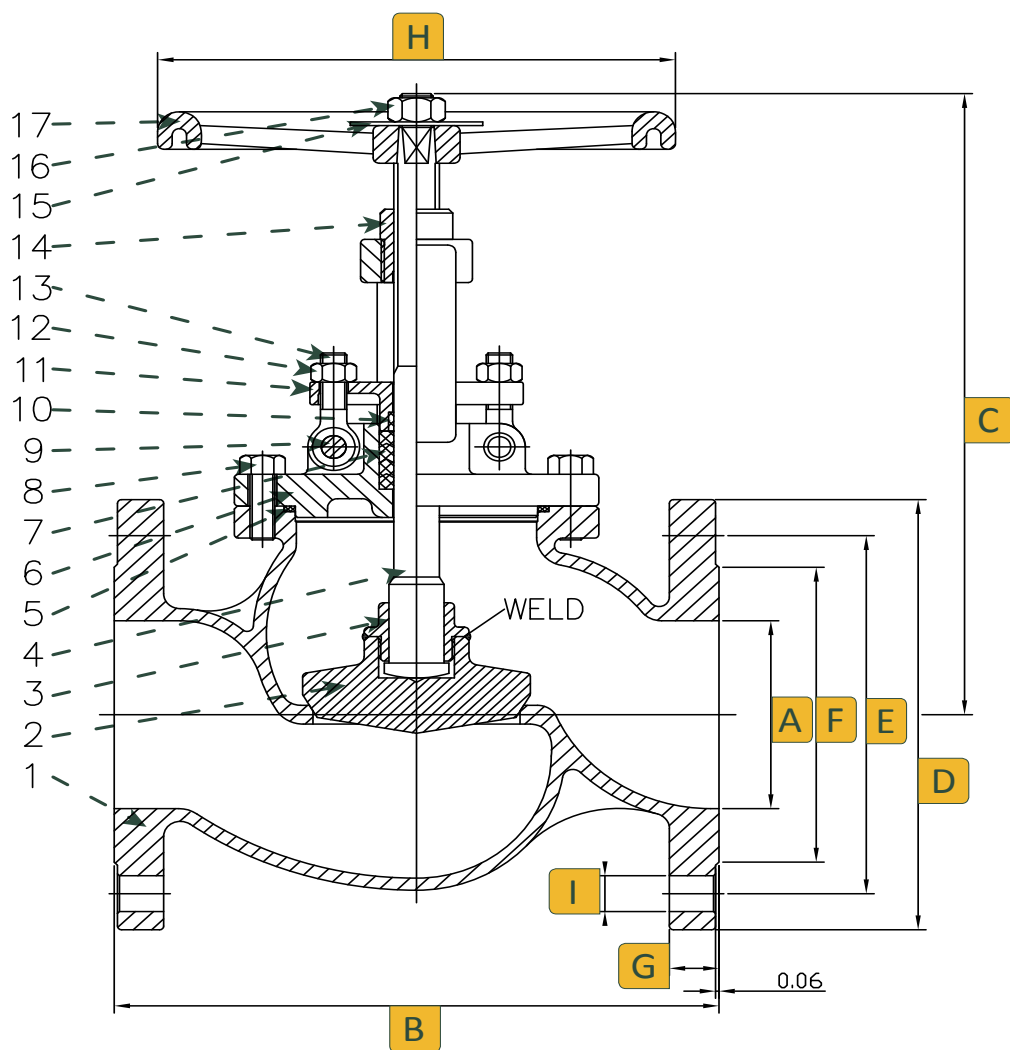
### Features

- Outside screw and yoke
- Bolted bonnet
- Stem / Wedge Connection meets API 600 Pull Test
- Welded Seat
- Yoke Integrated with Bonnet
- Lose Disc
- Renewable Seat Rings
- Flexible wedge, fully guided integrated seats
- Rising stem and non-rising hand-wheel
- Applicable Standards:
  - Steel valves ANSI B16.34
  - Face to face ANSI B16.10
  - End flanges ANSI B16.5
  - Buttweld ends ANSI B16.25
  - Inspection and test API 598



*Valves, Automation & Controls*

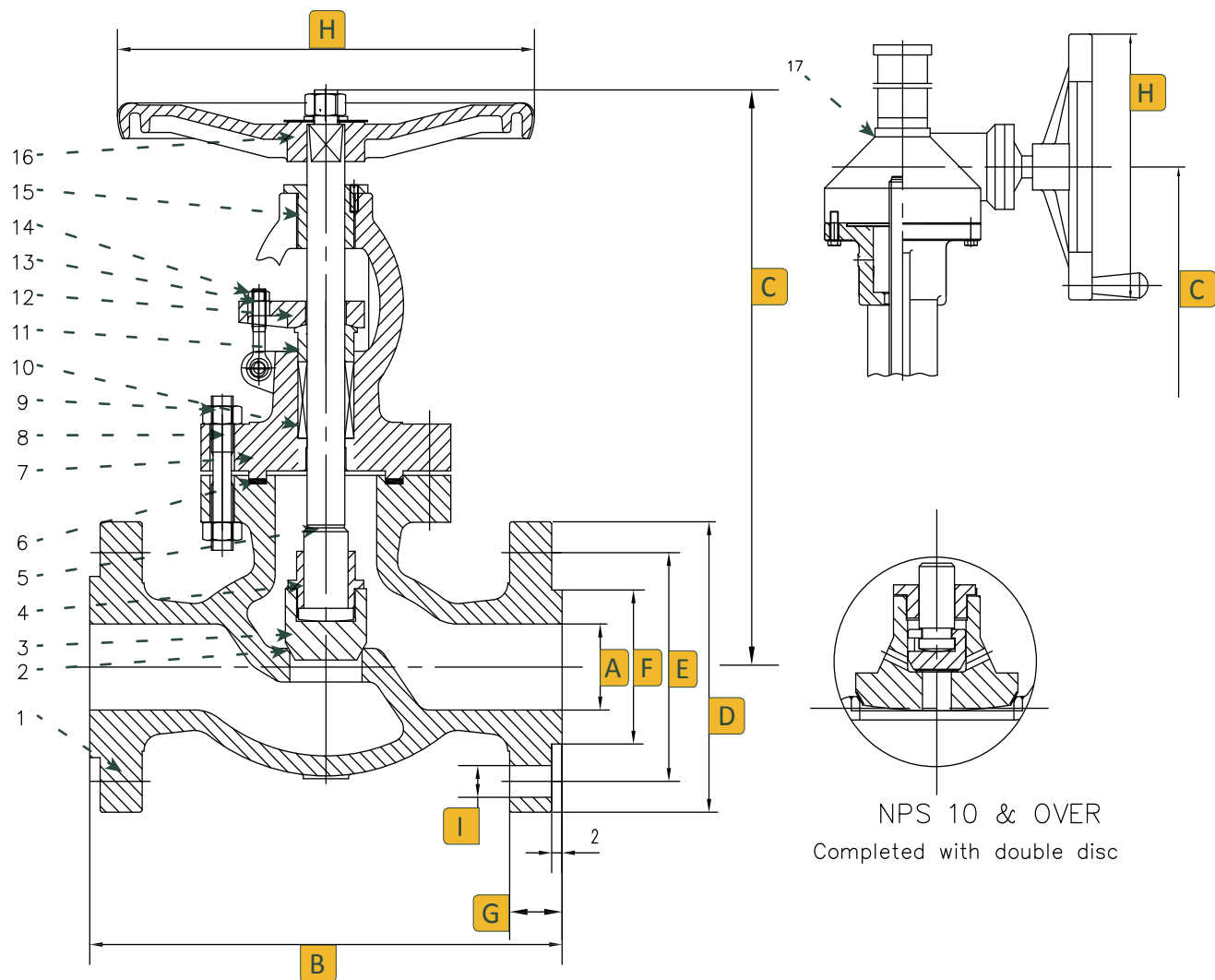




Dimensions (Inches)

Size	A	B	C	D	E	F	G	H	I	Num of Bolt Holes
1/2	0.59	4.25	7.32	3.50	2.38	1.38	0.43	5.51	0.625	4
3/4	0.79	4.61	7.32	3.88	2.75	1.69	0.43	5.51	0.625	4
1	0.98	5.00	8.35	4.25	3.12	2.00	0.43	5.51	0.625	4
1-1/2	1.57	6.50	9.69	5.00	3.88	2.88	0.56	6.29	0.625	4
2	1.97	7.99	9.92	6.00	4.75	3.62	0.62	7.87	0.75	4
2-1/2	2.56	8.50	12.20	7.00	5.50	4.12	0.69	7.87	0.75	4
3	3.15	9.49	12.87	7.50	6.00	5.00	0.75	9.84	0.75	4
4	3.94	11.50	15.12	9.00	7.50	6.19	0.94	9.84	0.75	8
6	5.91	15.98	21.50	11.00	9.50	8.50	1.00	13.78	0.875	8
8	7.87	19.49	26.34	13.50	11.75	10.62	1.12	13.78	0.875	8
10	9.84	24.49	32.44	16.00	14.25	12.75	1.19	19.69	1.00	12
12	12.00	27.50	31.30	19.00	17.00	15.00	1.25	18.11	1.00	12

No.	Part Name	Qty	Material
1	Body	1	316 Stainless Steel
2	Disc	1	316 Stainless Steel
3	Seat Ring	1	316 Stainless Steel
4	Stem	1	316 Stainless Steel
5	Bonnet Bolt	1	304 Stainless Steel
6	Gasket	1	304 Stainless Steel & Graphite
7	Bonnet	1	316 Stainless Steel
8	Gland Packing	1	PTFE
9	Pin	1	304 Stainless Steel
10	Gland Sleeve	1	PTFE
11	Eye Bolt	1	304 Stainless Steel
12	Gland	1	316 Stainless Steel
13	Nut	1	304 Stainless Steel
14	Yoke Sleeve	1	Brass
15	Handwheel	1	Ductile Iron
16	Washer	1	304 Stainless Steel
17	Nut	1	304 Stainless Steel



Size	A	B	C	D	E	F	G	H	I	Num of Bolt Holes
12	12.00	14.00	31.30	19.00	17.00	15.00	1.25	18.11	1.00	12
14	13.27	15.00	33.50	21.00	18.75	16.25	1.38	18.11	1.125	12
16	15.24	16.00	35.12	23.50	21.25	18.25	1.44	18.11	1.125	16

No.	Part Name	Material
1	Body	316 Stainless Steel
2	Seal Facing	316 Stainless Steel
3	Disc	316 Stainless Steel
4	Disc Nut	316 Stainless Steel
5	Stem	316 Stainless Steel
6	Gasket	316 Stainless Steel & Graphite
7	Bonnet	316 Stainless Steel
8	Bonnet Bolt	B8 Stainless Steel
9	Bonnet Nut	Grade 8 Nut
10	Stem Packing	Graphite
11	Gland	316 Stainless Steel
12	Gland Flange	316 Stainless Steel
13	Gland Eyebolt	B8 Stainless Steel
14	Gland Nut	Grade 8 Nut
15	Stem Nut	Steel
16	Hand Wheel	Ductile Iron
17	Gear Box	Ductile Iron

Shell Test Water psi	Seat Test Water psi	Seat Test Air psi
450	314	80

Temperature °F	Working Pressure psi
-20 to 100	285
200	260
300	230
400	200
500	170
600	140
650	125
700	110
750	95
800	80
850	85
900	50
950	35
1000	20

## Ordering

Fig: 8 - 45 - 1 - 1 - 6

Description: 8" - Series 45 - 150# Flange Ends - Stainless Steel

Size	Series	Class	Ends	Body Material	Options
2	45	1 150	1 Flange	6 316 Stainless Steel	X Oxygen Service SF Silicon Free RTJ Ring Type Joint Flange
2-1/2			2 Buttweld		
3					
4					
6					
8					
10					
12					
14					
16					

# Series 45316

## 300# Flanged Stainless Steel Globe Valve

### Features

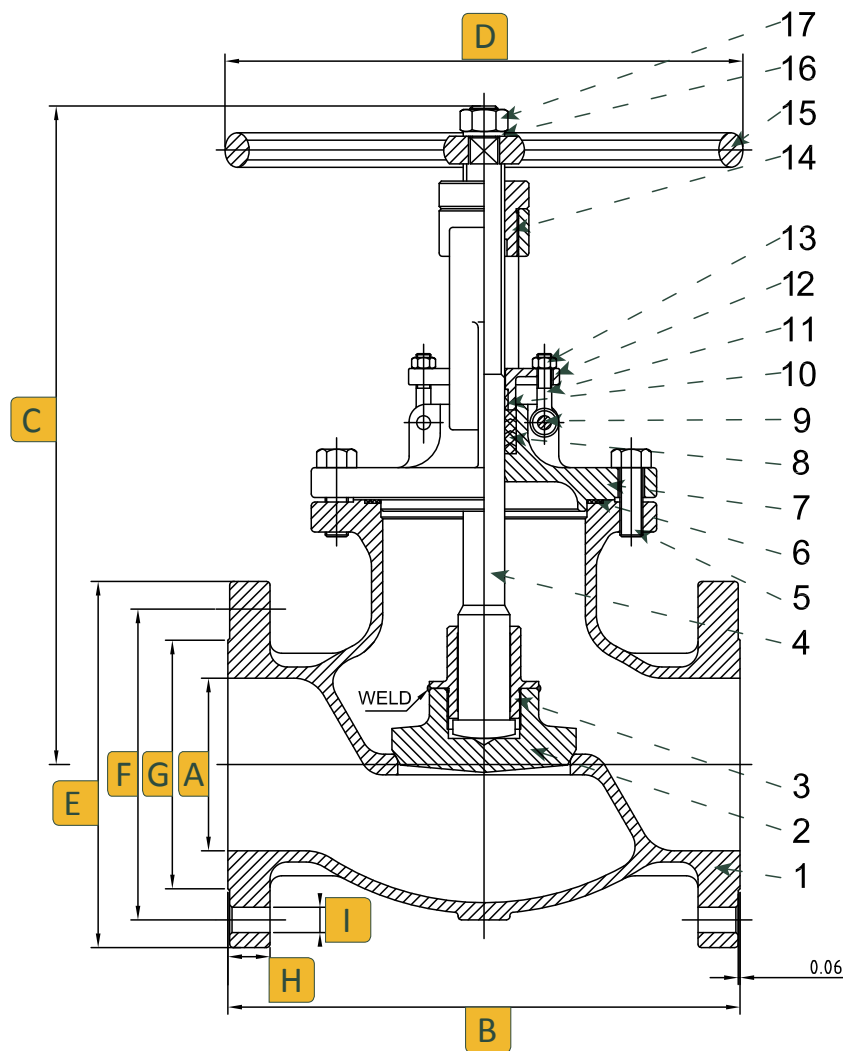
- Outside screw and yoke
- Bolted bonnet
- Stem / Wedge Connection meets API 600 Pull Test
- Welded Seat
- Yoke Integrated with Bonnet
- Lose Disc
- Renewable Seat Rings
- Flexible wedge, fully guided integrated seats
- Rising stem and non-rising hand-wheel
- Applicable Standards:
  - Steel valves ANSI B16.34
  - Face to face ANSI B16.10
  - End flanges ANSI B16.5
  - Buttweld ends ANSI B16.25
  - Inspection and test API 598



*Valves, Automation & Controls*

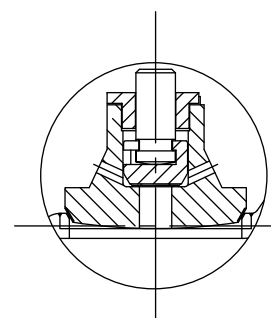
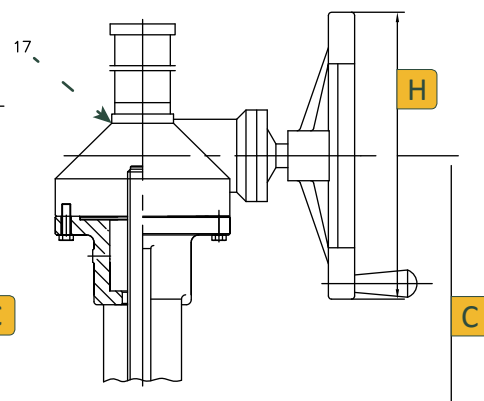
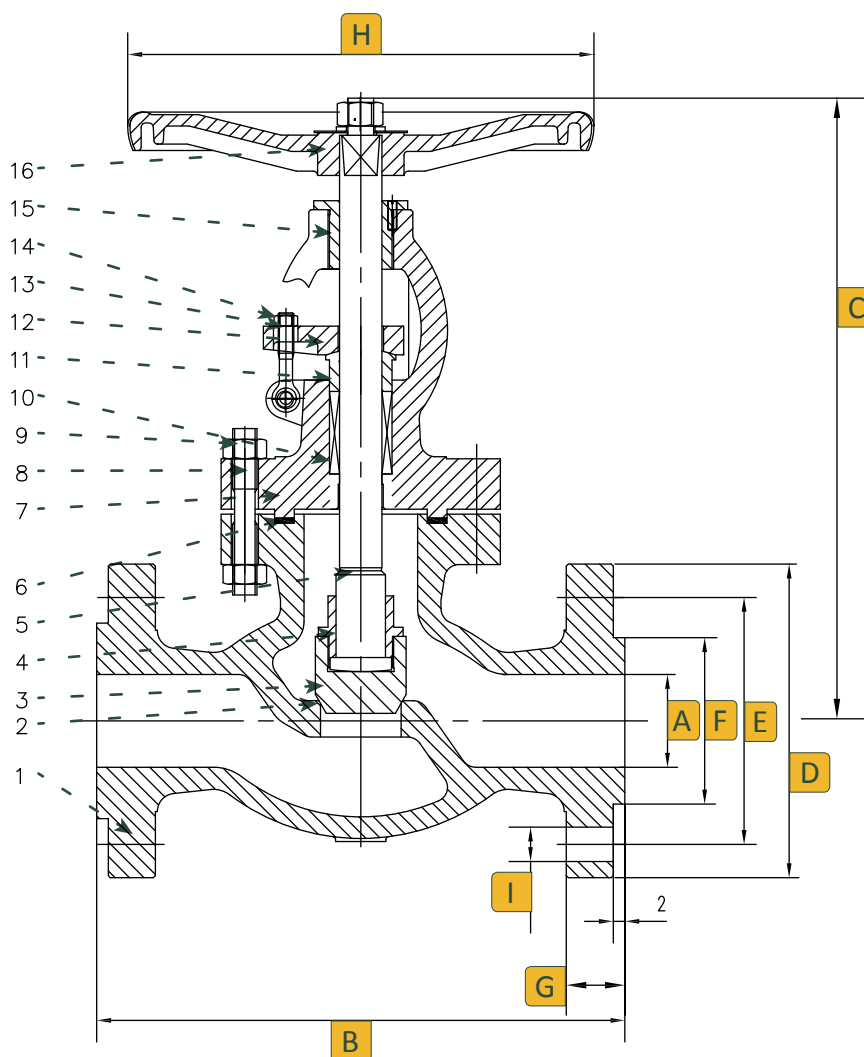


# 1/2" - 6" Dimensions, Parts & Materials



Size	A	B	C	D	E	F	G	H	I	Num of Bolt Holes
1/2	0.59	5.98	9.06	5.51	3.74	2.62	1.38	0.56	0.62	4
3/4	0.79	7.00	9.06	5.51	4.62	3.25	1.69	0.62	0.75	4
1	0.98	7.99	9.06	5.51	4.88	3.50	2.01	0.69	0.75	4
1-1/2	1.57	9.02	12.91	9.84	6.12	4.51	2.88	0.81	0.875	4
2	1.97	10.51	14.88	9.84	6.50	5.00	3.62	0.88	0.75	8
2-1/2	2.56	11.49	16.18	11.81	7.50	5.88	4.12	1.00	0.875	8
3	3.15	12.52	16.77	11.81	8.25	6.62	5.00	1.12	0.875	8
4	3.94	14.02	20.47	11.81	10.00	7.88	6.19	1.25	0.875	8
6	5.91	17.48	26.26	17.72	12.50	10.62	8.50	1.44	0.875	12

No.	Part Name	Qty	Material
1	Body	1	316 Stainless Steel
2	Disc	1	316 Stainless Steel
3	Seat Ring	1	316 Stainless Steel
4	Stem	1	316 Stainless Steel
5	Bonnet Bolt	1	304 Stainless Steel
6	Gasket	1	304 Stainless Steel & Graphite
7	Bonnet	1	316 Stainless Steel
8	Gland Packing	1	PTFE
9	Pin	1	304 Stainless Steel
10	Gland Sleeve	1	PTFE
11	Eye Bolt	1	304 Stainless Steel
12	Gland	1	316 Stainless Steel
13	Nut	1	304 Stainless Steel
14	Yoke Sleeve	1	Brass
15	Handwheel	1	Ductile Iron
16	Washer	1	304 Stainless Steel
17	Nut	1	304 Stainless Steel



NPS 10 & OVER  
Completed with double disc

Dimensions (Inches)

Size	A	B	C	D	E	F	G	H	I	Num of Bolt Holes
8	7.87	22.01	32.64	19.68	15.00	13.00	10.62	1.62	1.00	12
10	10.00	24.50	36.61	23.62	17.50	15.25	12.76	1.88	1.125	16
12	12.01	28.00	32.83	18.11	20.50	17.75	15.00	2.00	1.25	16
14	13.27	33.00	36.77	18.11	23.00	20.25	16.26	2.12	1.25	20
16	15.24	34.00	45.28	18.11	25.50	22.50	18.50	2.25	1.375	20

No.	Part Name	Material
1	Body	316 Stainless Steel
2	Seal Facing	316 Stainless Steel
3	Disc	316 Stainless Steel
4	Disc Nut	316 Stainless Steel
5	Stem	316 Stainless Steel
6	Gasket	316 Stainless Steel & Graphite
7	Bonnet	316 Stainless Steel
8	Bonnet Bolt	B8 Stainless Steel
9	Bonnet Nut	Grade 8 Nut
10	Stem Packing	Graphite
11	Gland	316 Stainless Steel
12	Gland Flange	316 Stainless Steel
13	Gland Eyebolt	B8 Stainless Steel
14	Gland Nut	Grade 8 Nut
15	Stem Nut	Steel
16	Hand Wheel	Ductile Iron
17	Gear Box	Ductile Iron

Shell Test Water psi	Seat Test Water psi	Seat Test Air psi
1125	814	80

Temperature °F	Working Pressure psi
-20 to 100	285
200	260
300	230
400	200
500	170
600	140
650	125
700	110
750	95
800	80
850	85
900	50
950	35
1000	20

## Ordering

Fig: 8 - 45 - 3 - 1 - 6

Description: 8" - Series 45 - 300# Flange Ends - Stainless Steel

Size	Series	Class	Ends	Body Material	Options
2	45	3 300	1 Flange	6 316 Stainless Steel	X Oxygen Service SF Silicon Free RTJ Ring Type Joint Flange
2-1/2			2 Buttweld		
3					
4					
6					
8					
10					
12					
14					
16					



# Series 25114

## 150# Flanged Cast Steel Check Valve



*Valves, Automation & Controls*

### Features

- Bolted Cover
- Swing Type
- Horizontal or Vertical lines
- Welded Seat
- Renewable Seat Rings
- Applicable Standards:
  - Steel valves ANSI B16.34
  - Face to face ANSI B16.10
  - End flanges ANSI B16.5
  - Buttweld ends ANSI B16.25
  - Inspection and test API 598

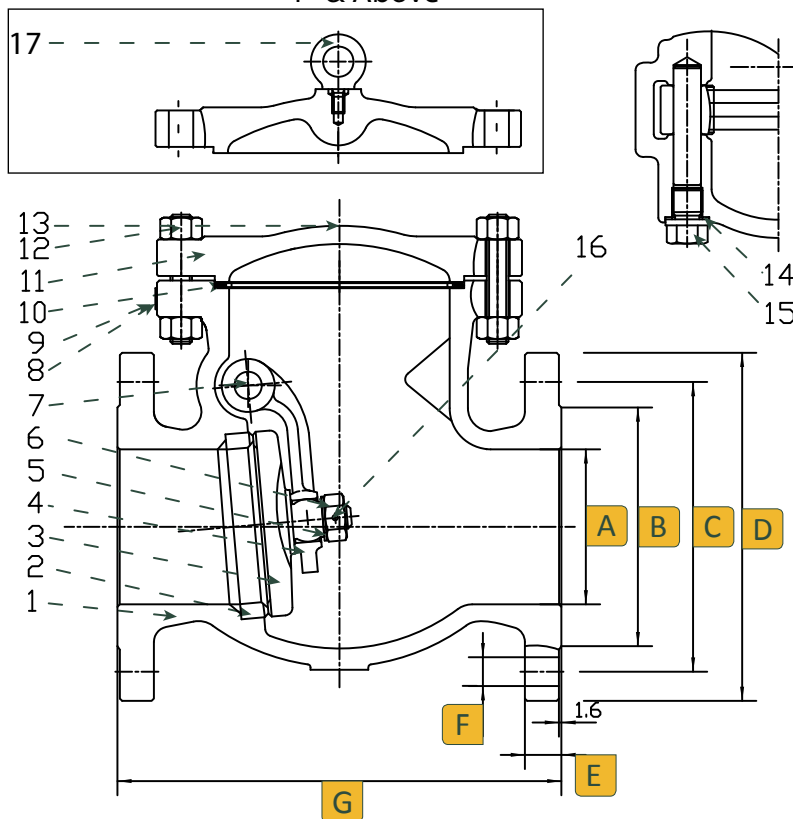


### Technical Information

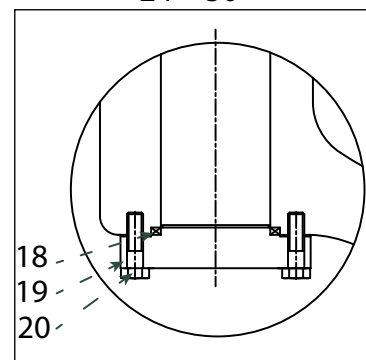
Temperature °F	Working Pressure psi
-20 to 100	285
200	260
300	230
400	200
500	170
600	140
650	125
700	110
750	95
800	80
850	85
900	50
950	35
1000	20

# Dimensions, Parts & Materials

4" & Above



24" - 30"



Size	A	B	C	D	E	F	G	Num of Bolt Holes
2	2.00	3.62	4.75	6.00	0.62	0.75	8.00	4
2-1/2	2.50	4.12	5.50	7.00	0.68	0.75	8.50	4
3	3.00	5.00	6.00	7.50	0.75	0.75	9.50	4
4	4.00	6.19	7.50	9.00	0.94	0.75	11.50	8
5	5.00	7.31	8.50	10.00	0.94	0.88	13.00	8
6	6.00	8.50	9.50	11.00	1.00	0.88	14.00	8
8	8.00	10.62	11.75	13.50	1.12	0.88	19.50	8
10	10.00	12.75	14.25	16.00	1.18	1.00	24.50	12
12	12.00	15.00	17.00	19.00	1.25	1.00	27.50	12
14	14.00	16.25	18.75	21.00	1.37	1.13	31.00	12
16	16.00	18.50	21.25	23.50	1.44	1.13	34.00	16
18	18.00	21.00	22.75	25.00	1.56	1.25	38.50	16
20	20.00	23.00	25.00	27.50	1.68	1.25	38.50	20
22	21.26	25.25	27.25	29.50	1.80	1.375	42.00	20
24	24.00	27.24	29.50	32.00	1.87	1.375	51.00	20
28	27.24	30.00	31.30	32.94	1.75	0.875	57.00	40
30	29.25	32.00	33.30	34.90	1.75	0.875	60.00	44

No.	Part Name	Material
1	Body	Carbon Steel A216
2	Seat	A105 & STL6
3	Disc	A105 & 410 Stainless Steel
4	Hinge	Carbon Steel A216
5	Gasket	A276 410
6	Nut	A276 410
7	Pin	A276 410
8	Rivit	304 Stainless Steel
9	Name Plate	304 Stainless Steel
10	Gasket	F304 & Flexible Graphite
11	Bonnet	Carbon Steel A216
12	Bolt	B7 Steel A193
13	Nut	2H Steel A194
14	Gasket	Soft Iron
15	Plug	410 Stainless Steel
16	Pin	304 Stainless Steel
17	Eyebolt	Carbon Steel
18	Gasket	F304 & Flexible Graphite
19	Bolt	Carbon Steel
20	Gland	Carbon Steel

## Ordering

Fig: 8 - 25 - 1 - 1 - 4

Description: 8" - Series 25 - 150# Flange Ends - Cast Steel

Size		Series	Class		Ends		Body Material		Options	
2	14	25	1	150	1	Flange	4	Cast Steel	X	Oxygen Service
2-1/2	16				2	Buttweld			SF	Silicon Free
3	18								RTJ	Ring Type Joint Flange
4	20									
6	22									
8	24									
10	28									
12	30									

Due to continuous development of our product range, we reserve the right to change the dimensions and information for this product as required.

# Series 25314

## 300# Flanged Cast Steel Check Valve

### Features

- Bolted Cover
- Swing Type
- Horizontal or Vertical lines
- Welded Seat
- Renewable Seat Rings
- Applicable Standards:
  - Steel valves ANSI B16.34
  - Face to face ANSI B16.10
  - End flanges ANSI B16.5
  - Buttweld ends ANSI B16.25
  - Inspection and test API 598

Temperature °F	Working Pressure psi
-20 to 100	285
200	260
300	230
400	200
500	170
600	140
650	125
700	110
750	95
800	80
850	85
900	50
950	35
1000	20

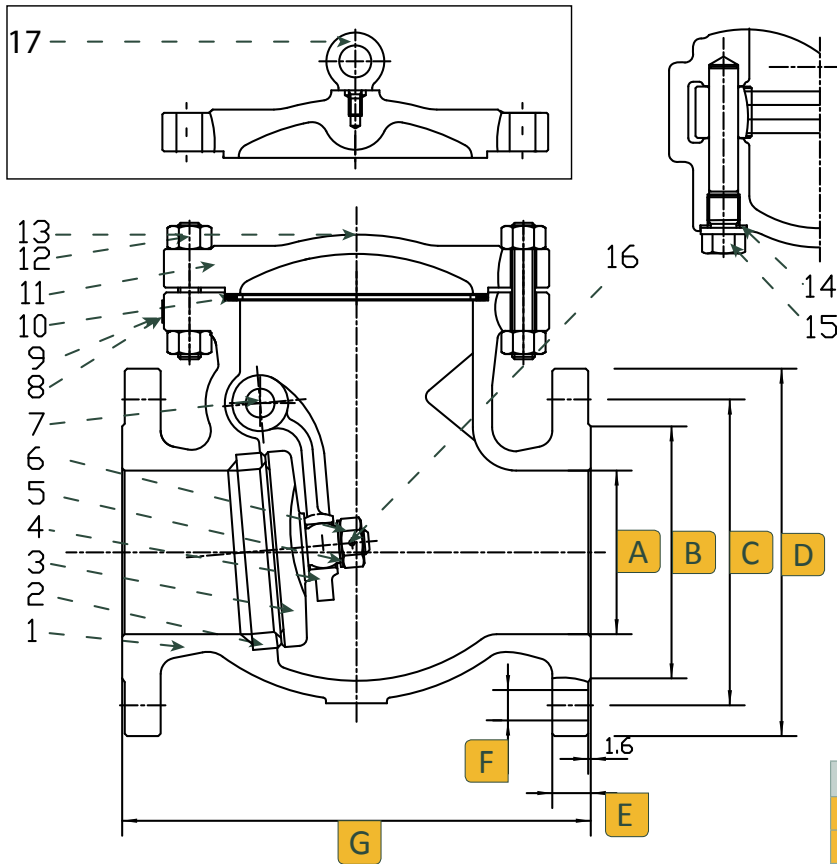


*Valves, Automation & Controls*

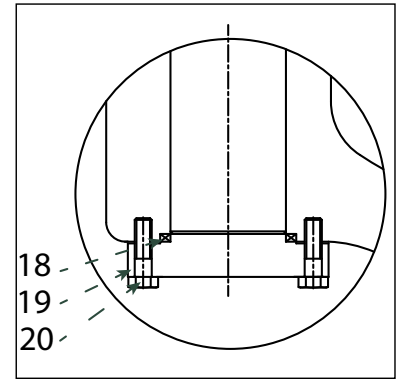


# Dimensions, Parts & Materials

4" & Above



20" & 24"



Size	A	B	C	D	E	F	G	Num of Bolt Holes
2	1.97	3.62	5.00	6.50	0.88	0.75	10.51	8
2-1/2	2.56	4.12	5.88	7.50	1.00	0.88	11.50	8
3	3.15	5.00	6.62	8.25	1.12	0.88	12.52	8
4	3.94	6.19	7.88	10.00	1.25	0.88	14.02	8
6	5.90	8.50	10.62	12.50	1.44	0.88	17.48	12
8	7.87	10.62	13.00	15.00	1.62	1.00	20.98	12
10	10.00	12.76	15.25	17.50	1.88	1.12	24.50	16
12	12.01	15.00	17.75	20.50	2.00	1.25	28.00	16
14	13.27	16.26	20.25	23.00	2.12	1.25	33.00	20
16	15.24	18.50	22.50	25.50	2.25	1.38	34.00	20
18	18.00	21.00	24.75	28.00	2.37	1.375	38.50	24
20	20.00	23.00	27.00	30.50	2.50	1.375	40.00	24
24	24.00	27.25	32.00	36.00	2.75	1.625	53.00	24

No.	Part Name	Material
1	Body	Carbon Steel A216
2	Seat	A105 & STL6
3	Disc	A105 & 410 Stainless Steel
4	Hinge	Carbon Steel A216
5	Gasket	A276 410
6	Nut	A276 410
7	Pin	A276 410
8	Rivit	304 Stainless Steel
9	Name Plate	304 Stainless Steel
10	Gasket	F304 & Flexible Graphite
11	Bonnet	Carbon Steel A216
12	Bolt	B7 Steel A193
13	Nut	2H Steel A194
14	Gasket	Soft Iron
15	Plug	410 Stainless Steel
16	Pin	304 Stainless Steel
17	Eyebolt	Carbon Steel
18	Gasket	F304 & Flexible Graphite
19	Bolt	Carbon Steel
20	Gland	Carbon Steel

## Ordering

Fig: 8 - 25 - 3 - 1 - 4

Description: 8" - Series 25 - 300# Flange Ends - Carbon Steel

Size	Series	Class	Ends	Body Material	Options
2	12	25	3	300	1
2-1/2	14		2	Flange	Buttweld
3	16				
4	18				
6	20				
8	22				
10	24				

# Series 25614

## 600# Flanged Cast Steel Check Valve



*Valves, Automation & Controls*

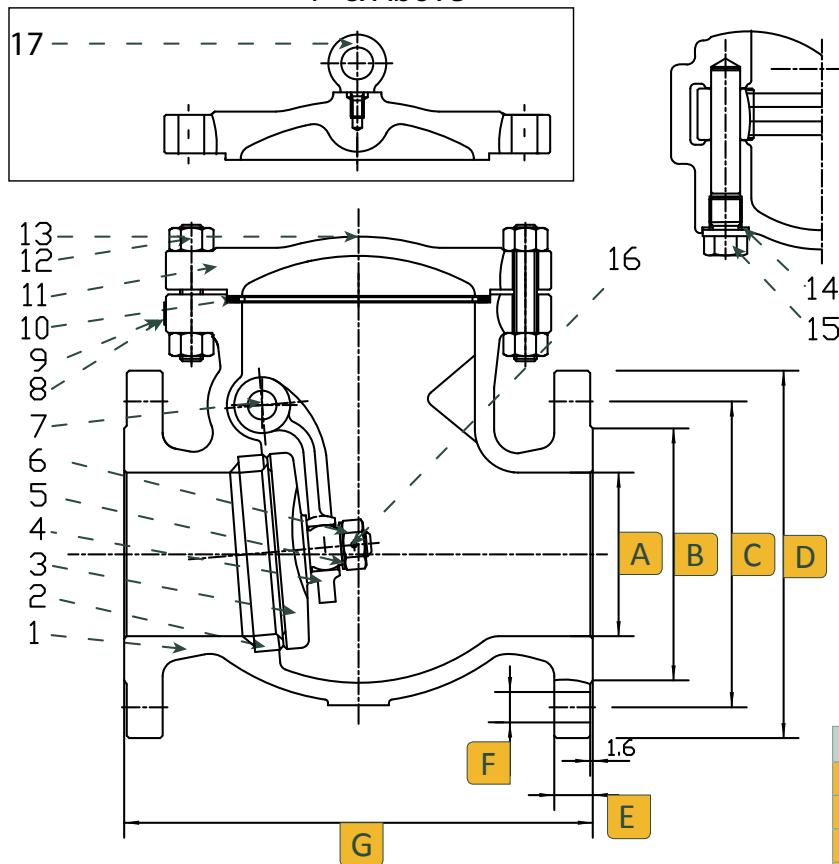
### Features

- Bolted Cover
- Swing Type
- Horizontal or Vertical lines
- Welded Seat
- Renewable Seat Rings
- Applicable Standards:
  - Steel valves ANSI B16.34
  - Face to face ANSI B16.10
  - End flanges ANSI B16.5
  - Buttweld ends ANSI B16.25
  - Inspection and test API 598

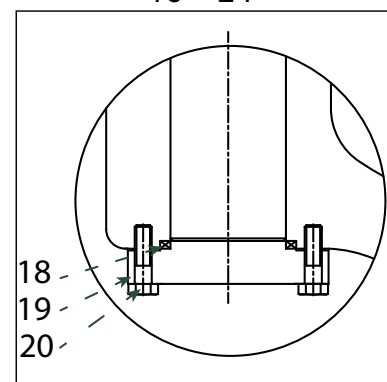


Temperature °F	Working Pressure psi
-20 to 100	285
200	260
300	230
400	200
500	170
600	140
650	125
700	110
750	95
800	80
850	85
900	50
950	35
1000	20

4" & Above



16" - 24"



Size	A	B	C	D	E	F	G	Num of Bolt Holes
2	2.00	3.62	5.00	6.50	1.00	0.75	11.50	8
2-1/2	2.50	4.12	5.88	7.50	1.12	0.875	13.00	8
3	3.00	5.00	6.62	8.25	1.25	0.875	14.00	8
4	4.00	6.19	8.50	10.75	1.50	1.00	17.00	8
6	6.00	8.50	11.50	14.00	1.88	1.125	22.00	12
8	8.00	10.62	13.75	16.50	2.19	1.25	26.00	12
10	10.00	12.75	17.00	20.00	2.50	1.375	31.00	16
12	12.00	15.00	19.25	22.00	2.62	1.375	33.00	20
14	14.00	16.25	20.75	23.75	2.75	1.50	35.00	20
16	16.00	18.50	23.75	27.00	3.00	1.625	39.00	20
20	20.00	23.00	28.50	32.00	3.50	1.75	47.00	24
24	24.00	27.25	33.00	37.00	4.00	2.00	55.00	24

No.	Part Name	Material
1	Body	Carbon Steel A216
2	Seat	A105 & STL6
3	Disc	A105 & 410 Stainless Steel
4	Hinge	Carbon Steel A216
5	Gasket	A276 410
6	Nut	A276 410
7	Pin	A276 410
8	Rivet	304 Stainless Steel
9	Name Plate	304 Stainless Steel
10	Gasket	F304 & Flexible Graphite
11	Bonnet	Carbon Steel A216
12	Bolt	B7 Steel A193
13	Nut	2H Steel A194
14	Gasket	Soft Iron
15	Plug	410 Stainless Steel
16	Pin	304 Stainless Steel
17	Eyebolt	Carbon Steel
18	Gasket	F304 & Flexible Graphite
19	Bolt	Carbon Steel
20	Gland	Carbon Steel

## Ordering

Fig: 8 - 25 - 6 - 1 - 4

Description: 8" - Series 25 - 600# Flange Ends - Cast Steel

Size		Series	Class		Ends		Body Material		Options	
2	12	25	6	600	1	Flange	4	Cast Steel	X	Oxygen Service
2-1/2	14				2	Buttweld			SF	Silicon Free
3	16								RTJ	Ring Type Joint Flange
4	18									
6	20									
8	22									
10	24									

# Series 25116

## 150# Flanged Stainless Steel Check Valve

### Features

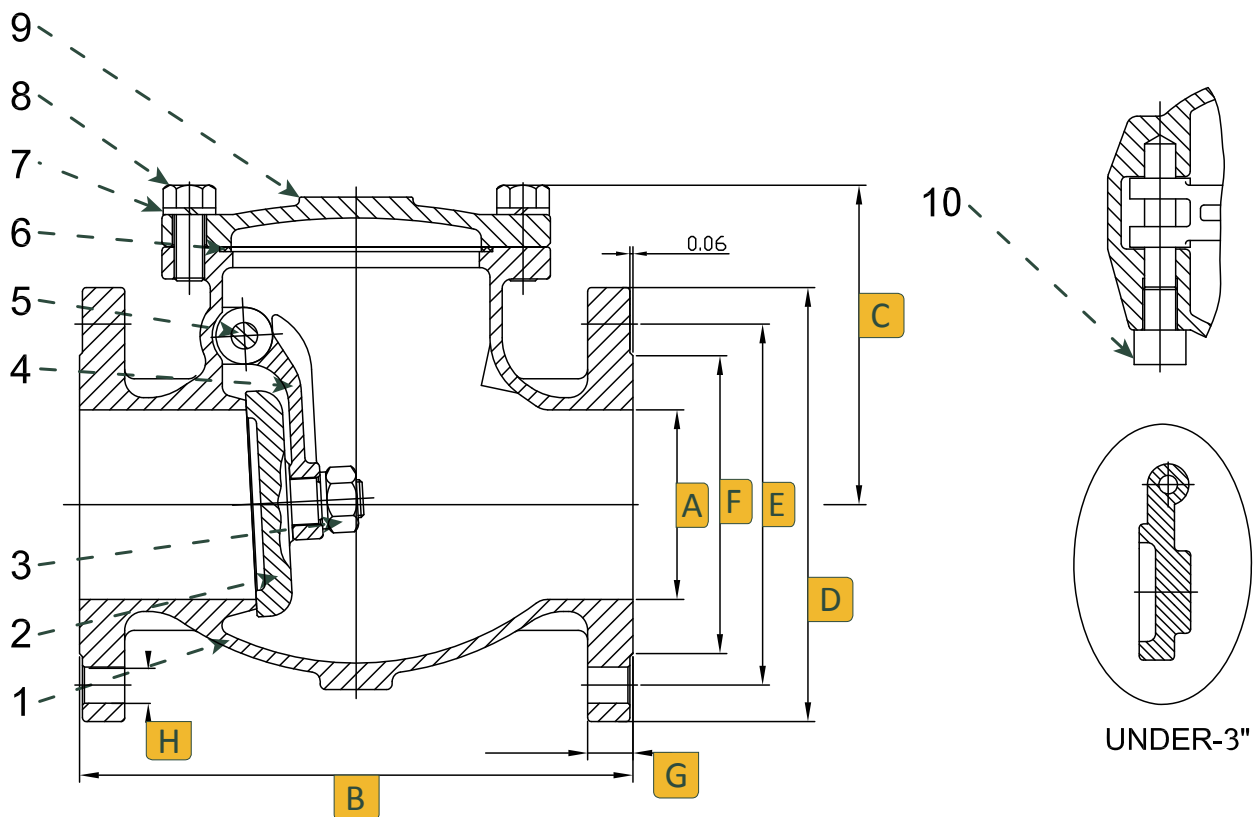
- Bolted Cover
- Swing Type
- Horizontal or Vertical lines
- Welded Seat
- Renewable Seat Rings
- Applicable Standards:
  - Steel valves ANSI B16.34
  - Face to face ANSI B16.10
  - End flanges ANSI B16.5
  - Buttweld ends ANSI B16.25
  - Inspection and test API 598



*Valves, Automation & Controls*



# 1/2" - 14" Dimensions, Parts & Materials

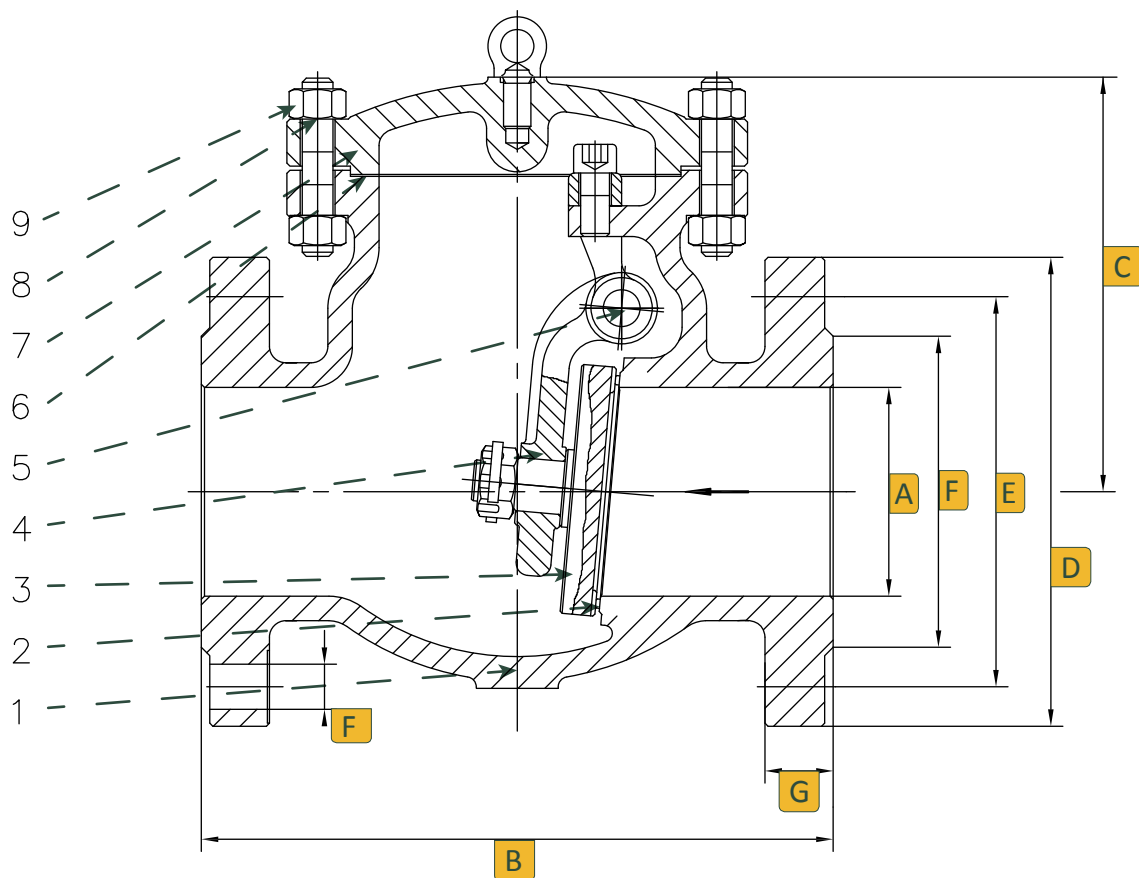


Size	A	B	C	D	E	F	G	H	Num of Bolt Holes
1/2	0.59	4.25	2.00	3.50	2.38	1.38	0.43	0.625	4
3/4	0.79	4.62	2.13	3.88	2.75	1.69	0.43	0.625	4
1	0.98	5.00	2.52	4.25	3.12	2.00	0.43	0.625	4
1-1/2	1.57	6.50	2.95	5.00	3.88	2.88	0.56	0.625	4
2	1.97	7.99	3.86	6.00	4.75	3.62	0.62	0.75	4
2-1/2	2.56	8.50	4.41	7.00	5.50	4.12	0.69	0.75	4
3	3.15	9.49	4.88	7.50	6.00	5.00	0.75	0.75	4
4	3.94	11.50	6.34	9.00	7.50	6.19	0.94	0.75	8
5	4.92	13.00	7.09	7.09	8.50	7.31	0.94	0.88	8
6	5.90	14.02	8.07	8.07	9.50	8.50	1.00	0.88	8
8	7.87	19.49	9.29	9.29	11.75	10.62	1.12	0.88	8
10	9.84	24.49	11.90	11.90	14.25	12.75	1.19	1.00	12
12	11.81	27.48	13.40	13.40	17.00	15.00	1.25	1.00	12
14	13.27	30.98	15.16	15.16	18.75	16.26	1.38	1.125	12

No.	Part Name	Material
1	Body	316 Stainless Steel
2	Disc	316 Stainless Steel
3	Nut	304 Stainless Steel
4	Arm Hinge	316 Stainless Steel
5	Hinge Pin	316 Stainless Steel
6	Gasket	PTFE
7	Washer	304 Stainless Steel
8	Bolt	304 Stainless Steel
9	Bonnet	316 Stainless Steel
10	Bolt	304 Stainless Steel



# 16" - 24" Dimenisons, Parts & Materials



Size	A	B	C	D	E	F	G	H	Num of Bolt Holes
16	15.24	34.00	1.44	23.50	21.25	18.25	1.44	1.125	24
18	17.24	38.50	1.56	25.00	22.75	21.00	1.56	1.25	24
20	19.25	38.50	1.69	27.50	25.00	23.00	1.69	1.25	24
24	23.27	51.00	1.88	32.00	29.50	27.25	1.88	1.25	24

No.	Part Name	Material
1	Body	316 Stainless Steel
2	Seal Facing	316 Stainless Steel
3	Disc	316 Stainless Steel
4	Hinge	316 Stainless Steel
5	Hinge Pin	316 Stainless Steel
6	Gasket	316 Stainless Steel + Graphite
7	Cover	316 Stainless Steel
8	Cover Bolt	B8 Stainless Steel
9	Cover Nut	Grade 8 Nut

Temperature °F	Working Pressure psi
-20 to 100	285
200	260
300	230
400	200
500	170
600	140
650	125
700	110
750	95
800	80
850	85
900	50
950	35
1000	20

## Ordering

Fig: 8 - 25 - 1 - 1 - 6

Description: 8" - Series 25 - 150# Flange Ends - Stainless Steel

Size	Series	Class	Ends	Body Material	Options
1/2	25	1 150	1 Flange	6 316 Stainless Steel	X Oxygen Service SF Silicon Free RTJ Ring Type Joint Flange
3/4			2 Buttweld		
1					
1-1/2					
2					
2-1/2					
3					
4					
5					
6					
8					
10					
12					
14					
16					
18					
20					
24					

# Series 25316

## 300# Flanged Stainless Steel Check Valve

### Features

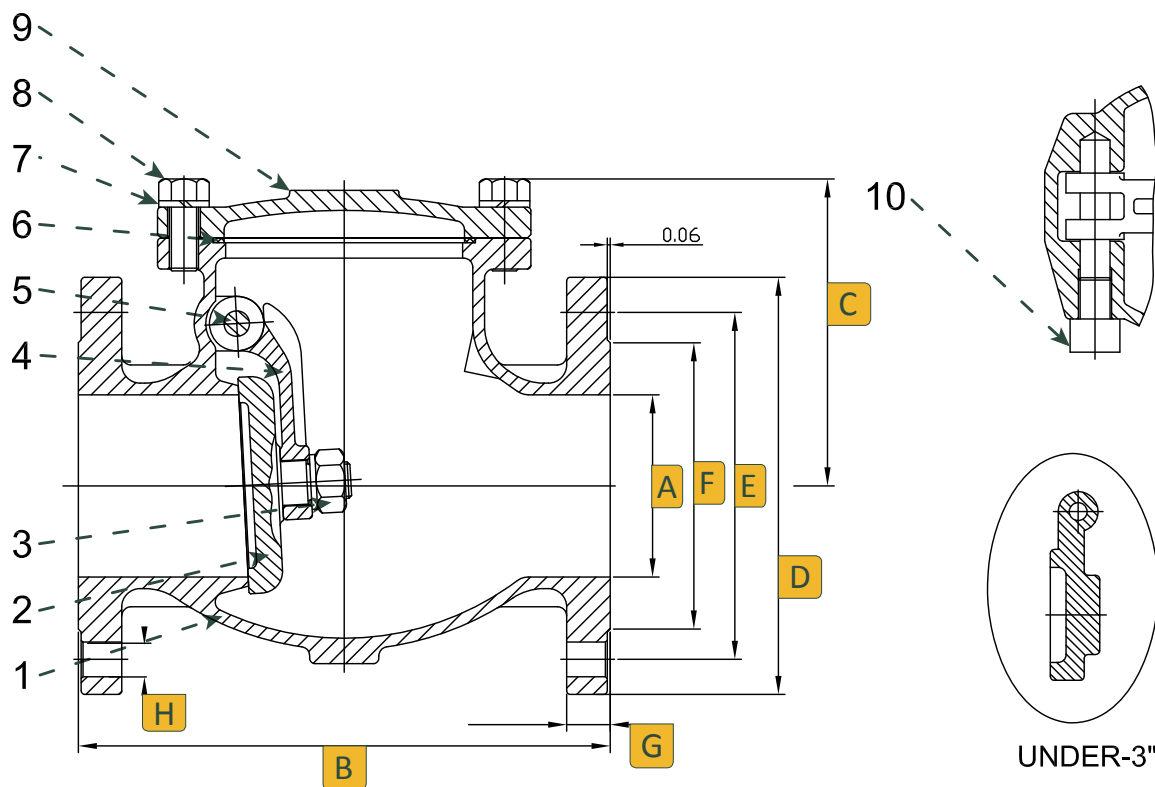
- Bolted Cover
- Swing Type
- Horizontal or Vertical lines
- Welded Seat
- Renewable Seat Rings
- Applicable Standards:
  - Steel valves ANSI B16.34
  - Face to face ANSI B16.10
  - End flanges ANSI B16.5
  - Buttweld ends ANSI B16.25
  - Inspection and test API 598



*Valves, Automation & Controls*



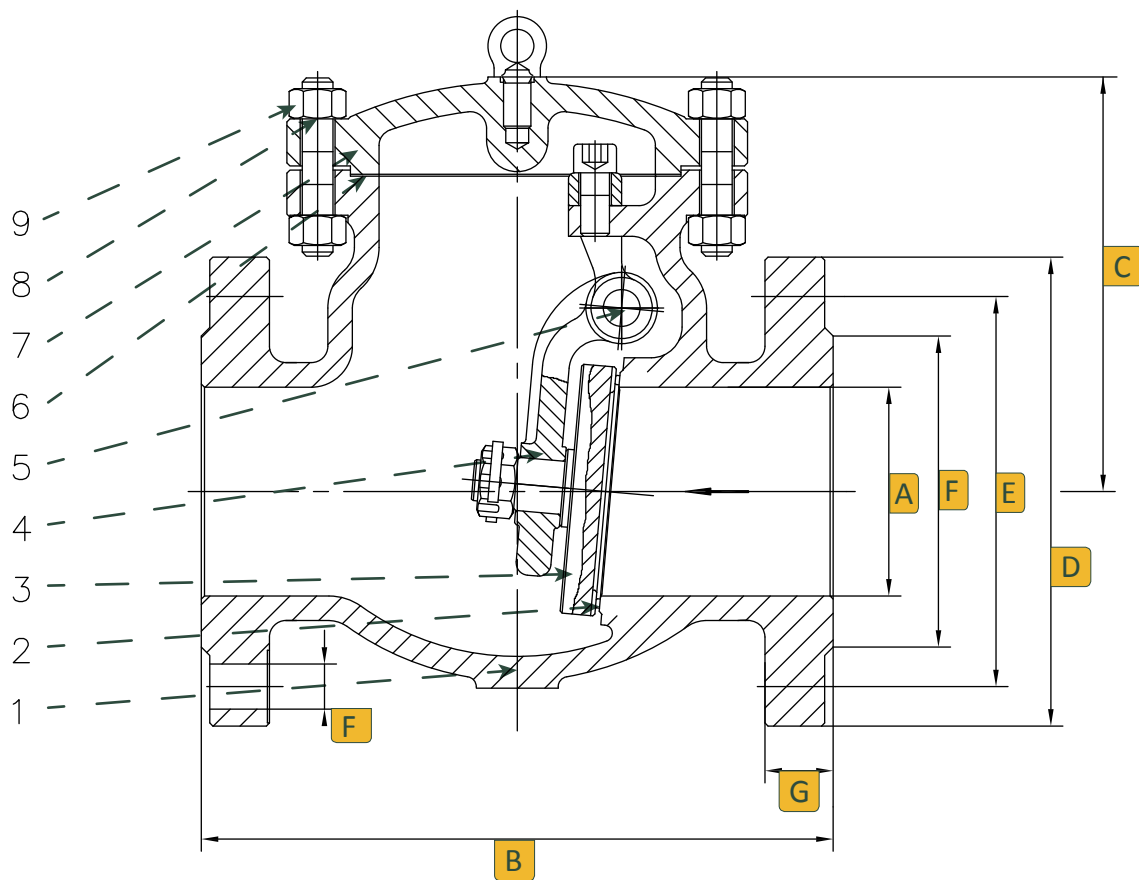
# 1/2" - 8" Dimensions, Parts & Materials



Size	A	B	C	D	E	F	G	H	Num of Bolt Holes
1/2	0.59	5.98	2.40	3.75	2.62	1.38	0.56	0.625	4
3/4	0.79	7.01	2.41	4.62	3.25	1.69	0.62	0.75	4
1	0.98	7.99	3.11	4.88	3.50	2.00	0.69	0.75	4
1-1/2	1.57	9.02	3.66	6.12	4.50	2.88	0.81	0.875	4
2	1.97	10.51	5.00	6.50	5.00	3.62	0.88	0.75	4
2-1/2	2.56	11.50	5.67	7.50	5.88	4.12	1.00	0.875	4
3	3.15	12.52	6.06	8.25	6.62	5.00	1.12	0.875	4
4	3.94	14.02	7.71	10.00	7.88	6.19	1.125	0.875	8
6	5.90	17.48	9.06	12.50	10.62	8.50	1.44	0.875	8
8	7.87	20.98	10.43	15.00	13.00	10.62	1.62	1.00	8

No.	Part Name	Material
1	Body	316 Stainless Steel
2	Disc	316 Stainless Steel
3	Nut	304 Stainless Steel
4	Arm Hinge	316 Stainless Steel
5	Hinge Pin	316 Stainless Steel
6	Gasket	PTFE
7	Washer	304 Stainless Steel
8	Bolt	304 Stainless Steel
9	Bonnet	316 Stainless Steel
10	Bolt	304 Stainless Steel

# 10" - 24" Dimensions, Parts & Materials



Size	A	B	C	D	E	F	G	H	Num of Bolt Holes
10	9.84	24.50	1.88	17.50	12.76	15.25	1.88	1.125	16
12	11.81	28.00	2.00	20.50	15.00	17.75	2.00	1.25	16
14	13.27	33.00	2.12	23.00	16.26	20.25	2.12	1.25	20
16	15.24	34.00	2.25	25.50	18.50	22.50	2.25	1.375	20
18	17.24	38.50	2.38	28.00	20.98	24.75	2.38	1.375	24
20	19.25	40.00	2.50	30.50	22.99	27.00	2.50	1.375	24
24	23.27	53.00	2.75	26.00	27.28	32.00	2.75	1.625	24

No.	Part Name	Material
1	Body	316 Stainless Steel
2	Seal Facing	316 Stainless Steel
3	Disc	316 Stainless Steel
4	Hinge	316 Stainless Steel
5	Hinge Pin	316 Stainless Steel
6	Gasket	316 Stainless Steel + Graphite
7	Cover	316 Stainless Steel
8	Cover Bolt	B8 Stainless Steel
9	Cover Nut	Grade 8 Nut

Temperature °F	Working Pressure psi
-20 to 100	285
200	260
300	230
400	200
500	170
600	140
650	125
700	110
750	95
800	80
850	85
900	50
950	35
1000	20

## Ordering

Fig: 8 - 25 - 3 - 1 - 6

Description: 8" - Series 25 - 300# Flange Ends - Stainless Steel

Size	Series	Class	Ends	Body Material	Options
1/2	25	3	300	1	Flange
3/4					
1					
1-1/2					
2					
2-1/2					
3					
4					
5					
6					
8					
10					
12					
14					
16					
18					
20					
24					
				2	Buttweld
				6	316 Stainless Steel
				X	Oxygen Service
				SF	Silicon Free
				RTJ	Ring Type Joint Flange